



***Certification Report***

***Certified Reference Material***

***ERM<sup>®</sup>-EB317***

***AlZn6CuMgZr***

***February 2013***  
***Revision January 2014***

Coordinator: Dr. Sebastian Recknagel  
BAM Federal Institute for Materials Research and Testing  
Division 1.6 "Inorganic Reference Materials"  
Richard-Willstätter-Straße 11  
12489 Berlin  
Tel.: ++49/30/8104 1111  
Fax.: ++49/30/8104 1117  
Email: [sebastian.recknagel@bam.de](mailto:sebastian.recknagel@bam.de)

## Summary

This report describes preparation, analysis and certification of the aluminium alloy reference materials ERM<sup>®</sup>-EB317.

The certified reference material is available in the form of discs (50 mm diameter and 30 mm height). It is intended for establishing and checking the calibration of optical emission and X-ray spectrometers (excluding micro-analysis) for the analysis of samples of similar matrix composition.

The following mass fractions and uncertainties have been certified:

| <b>Element</b> | <b>Mass fraction<br/>in %</b> | <b>Uncertainty<br/>in %</b> |
|----------------|-------------------------------|-----------------------------|
| Fe             | 0.112                         | 0.003                       |
| Cu             | 1.77                          | 0.06                        |
| Mg             | 2.39                          | 0.07                        |
| Cr             | 0.141                         | 0.003                       |
| Zn             | 6.93                          | 0.26                        |
| Zr             | 0.130                         | 0.008                       |
|                | <b>in mg/kg</b>               | <b>in mg/kg</b>             |
| Si             | 271                           | 22                          |
| Mn             | 912                           | 19                          |
| Ni             | 359                           | 14                          |
| Ti             | 952                           | 156                         |
| Ag             | 73                            | 5                           |
| Be             | 10.1                          | 0.8                         |
| Bi             | 41                            | 6                           |
| Ga             | 183                           | 12                          |
| In             | 162                           | 11                          |
| Pb             | 48.1                          | 2.3                         |
| Sn             | 238                           | 18                          |
| V              | 105                           | 7                           |

The following mass fractions and uncertainties are given as indicative values:

| <b>Element</b> | <b>Mass fraction<br/>in mg/kg</b> | <b>Uncertainty<br/>in mg/kg</b> |
|----------------|-----------------------------------|---------------------------------|
| B              | 37                                | 32                              |
| Ca             | 6.0                               | 2.7                             |
| P              | 27                                | 15                              |

This report contains detailed information on the preparation of the CRMs as well as on homogeneity investigations and on the analytical methods used for certification analysis.

The certified values are based on the results of 11 laboratories which participated in the certification interlaboratory comparison.

## Content

|  | Page |
|--|------|
| List of abbreviations .....                            | 5    |
| 1. Introduction.....                                   | 6    |
| 2. Companies/laboratories involved .....               | 6    |
| 3. Candidate material .....                            | 7    |
| 4. Homogeneity testing.....                            | 7    |
| 5. Characterisation study.....                         | 10   |
| 5.1 Analytical methods.....                            | 10   |
| 5.2 Analytical results and statistical evaluation..... | 12   |
| 6. Instructions for use and stability.....             | 42   |
| 7. Literature .....                                    | 42   |
| 8. Information on and purchase of the CRM .....        | 42   |

## List of abbreviations

(if not explained elsewhere)

|             |  |
|-------------|--|
| CRM         | certified reference material                             |
| ERM         | European reference material                              |
| FAAS        | flame atomic absorption spectrometry                     |
| ICP-OES     | inductively coupled plasma optical emission spectrometry |
| ICP-MS      | inductively coupled plasma mass spectrometry             |
| SOES        | spark optical emission spectrometry                      |
| XRF         | X-ray fluorescence spectrometry                          |
| M           | mean value   |
| n           | number of accepted data sets                             |
| INAA        | instrumental neutron activation analysis                 |
| s           | standard deviation of an individual data set             |
| $s_M$       | standard deviation of the mean of means                  |
| $s_{rel}$   | relative standard deviation                              |
| $\bar{s}_i$ | mean standard deviation                                  |
| $M_i$       | single result  |
| I           | ICP-OES (Tables 24 – 44)                                 |
| I(R)        | ICP-OES, revised value (Tables 24 – 44)                  |
| IMS         | ICP-MS (Tables 4 – 24)                                   |
| A           | FAAS (Tables 4 – 24)                                     |
| A(R)        | FAAS, revised value (Tables 24 – 44)                     |
| P           | spectrophotometry (Tables 24 – 44)                       |
| -s          | dissolution in acid                                      |
| -a          | dissolution in base                                      |

## 1. Introduction

In the metal-producing and metal-working industry mainly spark emission spectrometry (SOES) and X-ray fluorescence spectrometry (XRF) are used for reception inspection of raw materials, e.g. scrap, for quality control of end products and production control. These time saving analytical techniques require suitable reference materials for calibration and recalibration. The certified reference material ERM<sup>®</sup>-EB317 is based on a AlZn6CuMgZr alloy (EN AW-7050).

The idea to produce a reference material of this alloy type was the outcome of discussions within the German Gesellschaft für Bergbau, Metallurgie, Rohstoff- und Umwelttechnik (GDMB), especially the working group „Aluminium“ of the Committee of Chemists within GDMB. From this working group the needs were defined, since the members are potential users of the prepared CRMs. Secondly from this group the participating laboratories are recruited. Since all of these laboratories are highly experienced with aluminium alloy analysis and participated in earlier interlaboratory comparisons, there was no preceding round robin test for qualification.

Certification of reference materials is carried out on the basis of the relevant ISO-Guides [1-3], the „Guidelines for the production of BAM Reference Materials“ [4] and the “Technical Guidelines for the Production and Acceptance of a European Reference Material” [5].

## 2. Companies/laboratories involved

### Preparation of the material:

- Otto Fuchs KG, Meinerzhagen

### Test for homogeneity:

- BAM Bundesanstalt für Materialforschung und -prüfung

### Participants in the certification interlaboratory comparison:

- 3A Technology & Management AG, Neuhausen, Switzerland
- Constellium, Centre de Recherches de Voreppe, Voreppe, France
- AMAG Austria Metall AG, Ranshofen, Austria
- BAM Bundesanstalt für Materialforschung und -prüfung, Berlin, Germany
  - Division 1.6 Inorganic Reference Materials
  - Division 1.4 Process Analytical Technology
- HORIBA Jobin Yvon GmbH, Unterhaching, Germany
- Hydro Aluminium Rolled Products GmbH, R&D-Bonn, Germany
- Hydro Aluminium Rolled Products GmbH, Hamburg, Germany
- Hydro Aluminium Gießerei Hannover GmbH, Hannover, Germany
- Institute of Non-Ferrous Metals, Gliwice, Poland
- Otto Fuchs KG, Meinerzhagen, Germany

### Statistical evaluation of the data

- BAM Bundesanstalt für Materialforschung und -prüfung, Berlin

### 3. Candidate material

The candidate material, EN AW-7050, was casted by Otto Fuchs KG, Meinerzhagen, Germany to an ingot with a diameter of 242 mm and a length of 850 mm.

After casting the material was pressed to a rod with a length of 17 m. This rod was sawed into 2 m – pieces. All these steps were performed by Otto Fuchs KG. The 2 m rods were sent to BAM, where the rods were cut into discs with a height of 32 mm.

In total a number of 496 discs was prepared and numbered according to Figure 1.

|         |         |         |         |         |         |         |         |         |
|---------|---------|---------|---------|---------|---------|---------|---------|---------|
| 1 to 59 | 1 to 58 | 1 to 57 | 1 to 58 | 1 to 58 | 1 to 57 | 1 to 57 | 1 to 59 | 1 to 33 |
| A       | M1      | M2      | M3      | M4      | M5      | M6      | M7      | EA      |

Fig. 1: Preparation of discs from a 17 m - rod.

### 4. Homogeneity testing

Homogeneity testing of the raw material was performed on some specific discs using spark emission spectrometry (SOES). In addition the whole batch of discs was investigated using X-ray fluorescence spectrometry (XRF). Especially in case of SOES the sample amount investigated is much smaller than the sample intake typically used for wet chemical analysis.

Possible reasons for an inhomogeneous distribution of elements in the raw material may be a change of the composition of the melt during the casting procedure because some elements may volatise or segregate during the solidification of the material. Since the raw material was produced by casting of a rod, concentration gradients can occur over the length of the rod (axial) as well as over the area of the rod (radial, see Figures 2 and 3):

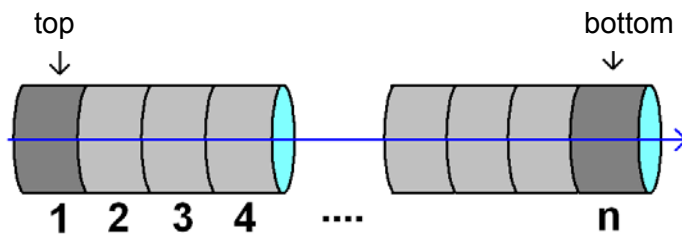


Fig. 2: Axial composition gradient

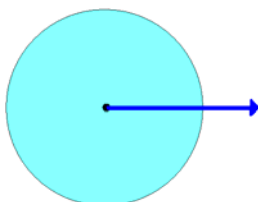


Fig. 3: Radial composition gradient

Therefore it is necessary to investigate the raw material for both axial and radial inhomogeneities. The testing for radial inhomogeneities was performed on three discs (M2-37, M3-2 and M6-52). This investigation was carried out at BAM. To perform this test all three discs were investigated twice putting the sparks on three circles (outer circle: 16 sparks, inner circle: 8 sparks; centre: 1 spark).

For some elements there was an inhomogeneity in the centre of the disc. Therefore the centre of the sample was excluded for analysis. I.e. an area 12 mm in diameter in the centre of the discs should be avoided for optical emission spectrometry.

Tab. 1 shows the discs selected for the axial homogeneity test using SOES (ca. 8 % of the total number of discs according to ASTM standard E 826-90 [6]). All tests were carried out with an OBLF QSL 1500 spectrometer.

Tab. 1: Discs analysed for homogeneity testing of ERM<sup>®</sup>-EB317

|     |       |       |       |       |       |       |       |      |
|-----|-------|-------|-------|-------|-------|-------|-------|------|
| A3  | M1-2  | M2-2  | M3-2  | M4-3  | M5-2  | M6-2  | M7-5  | EA05 |
| A17 | M1-22 | M2-19 | M3-12 | M4-16 | M5-14 | M6-19 | M7-15 | EA14 |
| A35 | M1-36 | M2-37 | M3-29 | M4-33 | M5-38 | M6-37 | M7-34 | EA28 |
| A55 | M1-58 | M2-56 | M3-56 | M4-56 | M5-55 | M6-52 | M7-57 |      |

In addition all discs were analysed with XRF using a wavelength dispersive MagiX Pro instrument (Panalytical, Almelo, The Netherlands). Before measuring the disc its surface was milled. One of the discs was used as a drift control sample.

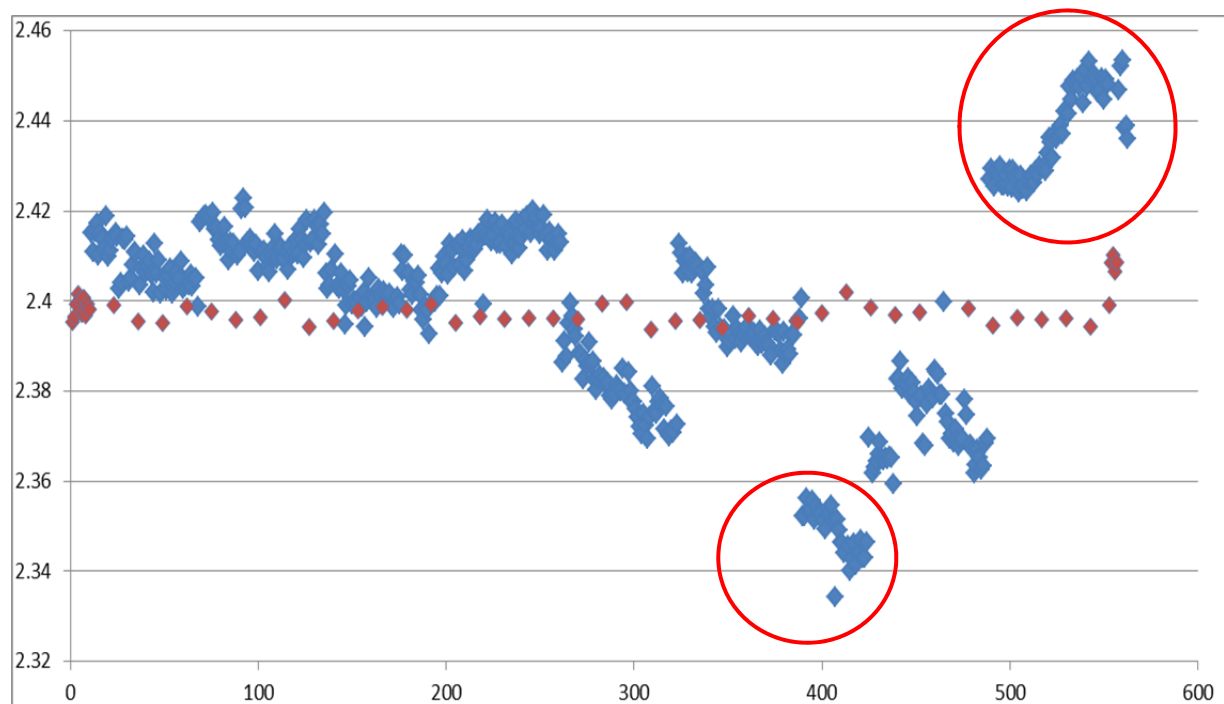


Fig. 4: Determination of Mg in the total batch of ERM<sup>®</sup>-EB317 (encircled: results for rod sections A and EA, x-axis: number of measurement, y-axis: Mg mass fraction in %, red dots: drift control sample)



This sample was used to determine the spread deriving from the method (10 repetitions). It was also measured after each group of 12 samples to compensate for drifts. For the elements Si, Mg, P, Ni, Cu, Zn, drift compensation was necessary. As a result of XRF-measurements the parts A and EA, i.e. beginning and end of the rod were removed and not used as CRM. Fig. 4 shows the results of Mg-determination. Parts A and EA are encircled. Similar effects could be observed for the elements P and Cu.

All uncertainty contributions due to inhomogeneities are included into the total uncertainty of the resp. certified values.

Since the measured spread of results in all cases contains contributions from both inhomogeneity and the analytical method it is necessary to distinguish between them and to separate the contribution due to the inhomogeneity. This is done by subtracting the variance of the instrumental spread from the variances resulting from inhomogeneities. This approach was used for inhomogeneity investigation over the length of the rods.

Assuming that during the cast process of a rod the solidification of the material proceeds from the outer part of the rod to the center there should be circular areas without any composition gradient. Apart from potential agglomerations of trace elements on crystal boundaries the spread of results measured on a specific circle represents the spread of the method. With this assumption it is possible to calculate the spread of the method and to separate it from the spread due to inhomogeneities of the material.

The lowest standard deviation measured on one specific circle ("inner" or "outer") is taken as a measure for the repeatability of the measure  $s_{\text{method}}$ .

The number of measurements performed on the three discs chosen for testing radial inhomogeneity was 16 on the outer circle, 8 on the inner circle and one in the center of the area.

The uncertainty contributions resulting from homogeneity testing over and rod length (between) were calculated following the equation:

$$s_{\text{eff}} = \sqrt{s_{\text{sample}}^2 - s_{\text{method}}^2} \quad (1)$$

In principle it has to be:

$$s_{\text{eff}} = \sqrt{\frac{s_{\text{sample}}^2 - s_{\text{method}}^2}{n_0}} \quad (1a)$$

here  $n_0 = 1$  as „worst-case-estimation" was used.

In case that the inhomogeneity contributions are in the same order as the precision of the analytical method, it could happen that the term under the square root becomes negative. In this case " $s_{\text{eff}}$ " cannot be calculated and an uncertainty contribution  $u_{\text{bb}}$  taking into account a possibly hidden inhomogeneity  $u_{\text{bb}}$  is then calculated using the following equation:

$$u_{\text{bb}} = \sqrt{\frac{s_{\text{method}}^2}{p}} \cdot \sqrt[4]{\frac{2}{\nu - 1}} \quad (2)$$

with  $p$  = number of measurements to establish the precision of the method

$\nu - 1$  = degrees of freedom of the calculation of „ $s_{\text{method}}^2$ ”.

Homogeneity testing over the length of the rod was performed twice (SOES and XRF). Inhomogeneity contribution to the total uncertainty was considered only once, i.e. the more precise results were taken into account.

The approach described above was used for the evaluation of the homogeneity measurements over the total batch. In case of the homogeneity investigations over the area (performed on three selected discs) another approach was used.

To calculate the necessary data an unbalanced ANOVA was carried out taking into account that the number of single measurements is different for the center, the inner and the outer circle. For technical reasons, at  $r_0$  (centre) only one measurement per height position is possible. An ANOVA requires minimum two measurements per factor value. Thus, the value for  $r_0$  should be replaced by a dummy. This dummy is defined as follows:

The two values replacing the one measured have a mean equal to the value measured, and a standard deviation equal to the average within-variation. This resembles the situation were one could take two independent measurements at the same place, with values deviating by the average standard deviation (non-destructive testing method). A first guess for the average standard deviation may be calculated from the data for  $r_{\text{in}}$  (inner circle) and  $r_{\text{out}}$  (outer circle). As results from these calculations an inhomogeneity factor for the radius and one for the height of the disc is obtained. From these values a combined inhomogeneity factor is calculated. This factor is compared with the within standard deviation calculated from the ANOVA-data. The larger factor is used for uncertainty calculation.

The estimates of inhomogeneity contributions  $u_{\text{bb}}$  potentially hidden by the measurement uncertainty and to be included into the total uncertainty budget were estimated according to ISO Guide 35 [3] as the maximum of the values obtained from Eq. (3) and (4).

$$s_{\text{bb}} = \sqrt{\frac{MS_{\text{among}} - MS_{\text{within}}}{n}} \quad (3)$$

$$s_{\text{bb min}} = \sqrt{\frac{MS_{\text{within}}}{n}} \times \sqrt[4]{\frac{2}{N(n-1)}} \quad (4)$$

with

$MS_{\text{among}}$  mean of squared deviations between discs (from 1-way ANOVA)

$MS_{\text{within}}$  mean of squared deviations within discs (from 1-way ANOVA)

$n$  number of replicate analyses per disc

$N$  number of discs selected for homogeneity study

To distinguish between the inhomogeneity contributions deriving from radial and axial inhomogeneities the axial part is given as  $u_{\text{bb}}(1)$ , the radial part is given as  $u_{\text{bb}}(2)$ .

## 5. Characterisation study

### 5.1 Analytical methods

11 laboratories participated in the certification interlaboratory comparison. For some elements part of the laboratories used more than one analytical method reporting more than

one dataset. 10 laboratories received a randomly chosen disc, the eleventh laboratory received solutions prepared by BAM.

The laboratories were asked to analyse six subsamples. They were free to choose any suitable analytical method for analysis. Table 2 shows the analytical methods used by the participating laboratories.

For all analytical methods where a calibration was necessary this calibration was performed using liquid standard solutions. All participating laboratories were asked to use only standard solutions prepared from pure metals or stoichiometric compounds or well checked commercial calibration solutions.

Table 2: Analytical procedures used by the participating laboratories

| Lab-No. | Element.   | Sample mass | Sample pretreatment                                | Analytical method   |
|---------|--|-------------|--|---|
| 1       | Fe, Cu, Mn, Cr, Ni, Ti, B, Be, Bi, Ca, Ga, In, P, Pb                     | 0.5 g       | Dissolution with HCl                               | ICP-OES, calibration with pure metals or pure substances  |
|         | Ag   | 0.5 g       | Dissolution with NaOH                              | ICP-OES, calibration with pure substance  |
| 2       | Si, Fe, Cu, Mg, Mn, Cr, Ni, Zn, Ti, Zr, Ga, In, Pb, Sn, V                | 0.5 g       | Dissolution with HCl/H <sub>2</sub> O <sub>2</sub> | ICP-OES, calibration with commercial solutions (Merck)  |
|         | Si   | 0.5 g       | Dissolution with NaOH                              | Spectrophotometry   |
|         | Ti, Ni   | 1 g         | Dissolution with HCl/H <sub>2</sub> O <sub>2</sub> | Spectrophotometry   |
|         | In, Fe, Cr, Zn, Mn, Ag, Ga   | 15 mg       |  | Instrumental Neutron Activation Analysis  |
| 3       | Si, Fe, Cu, Mg, Mn, Cr, Ni, Zn, Ti, Zr, Ag, Be, Ga, In, Pb, Sn, V        | 0.5 g       | Dissolution with HCl/H <sub>2</sub> O <sub>2</sub> | ICP-OES, calibration with commercial mono element solutions                                     |
| 4       | Si, Fe, Cu, Mg, Mn, Cr, In, Zn, Ti                                       | 0.5 g       | Dissolution with NaOH                              | ICP-OES with matrix matched standards (AI 5N5), calibration with pure metals or pure substances |
|         | Ni, Be, Ca, Ga, V  | 0.5 g       | Dissolution with HNO <sub>3</sub> /HF              | ICP-OES with matrix matched standards (AI 5N5), calibration with pure metals or pure substances |
|         | P  | 0.5 g       | Dissolution with HCl/HNO <sub>3</sub>              | ICP-OES with matrix matched standards (AI 5N5), calibration with pure substance                 |
|         | Ag, B, Bi, Pb, Sn  | 0.5 g       | Dissolution with HNO <sub>3</sub> /HF              | ICP-MS with matrix matched standards (AI 5N5), calibration with pure metals or pure substances  |
| 5       | Si, Fe, Cu, Mg, Mn, Cr, Ni, Zn, Ti, Zr, Ag, Be, Bi, Ga, In, Pb, Sn, V    | 0.5 g       | Dissolution with NaOH                              | ICP-OES   |
| 6       | Si, Fe, Cu, Mg, Mn, Cr, Ni, Zn, Ti, Zr, Ag, B, Be, Bi, Ga, In, Pb, Sn, V | 0.5 g       | Dissolution with NaOH                              | ICP-OES, calibration with pure metals or pure chemicals   |
|         | Fe, Cu, Mg, Mn, Cr, Ni, Zn, Ti, Zr, Ag, B, Bi, Ca, Ga, Pb                | 0.5 g       | Dissolution with HCl                               | ICP-OES, calibration with pure metals or pure chemicals   |
|         | P  | 0.5 g       | Dissolution with HNO <sub>3</sub> /HF              | ICP-OES, calibration with pure chemicals  |

Table 2 (cont.): Analytical procedures used by the participating laboratories

|    |   |       |   |   |
|----|---|-------|---|---|
| 8  | Si, Fe, Cu, Mn, Cr, Ni, Ti, Zr, Ga,                                 | 0.3 g | Dissolution with HNO <sub>3</sub>                                 | XRF, reconstitution   |
| 9  | Fe, Mn, Mg, Cr, Ni, Ti, Zr, In, V                                   | 1 g   | Dissolution with HNO <sub>3</sub> /HF                             | ICP-OES   |
|    | Fe, Cu, Mg, Ni, Zn,   | 1 g   | Dissolution with HNO <sub>3</sub> /HF                             | FAAS  |
| 10 | Si, Fe, Cu, Mn, Mg, Cr, Ni, Zn, Ti, Zr, Be, Sn, V                   | 0.5 g | Dissolution with NaOH   | ICP-OES, calibration with pure metals or pure chemicals     |
|    | Si  | 0.5 g | Dissolution with NaOH   | Spectrophotometry, calibration with pure chemicals          |
|    | Fe, Cu, Mn, Mg, Cr, Ni, Zn, Ti, B, Be, Ca, Ga, Sn, V                | 1 g   | Dissolution with HCl/HNO <sub>3</sub>                             | ICP-OES, calibration with pure metals or pure chemicals     |
|    | Ag, Be, Bi, Ga, In, P, Pb, Sn, V                                    | 1 g   | Dissolution with HNO <sub>3</sub> /H <sub>2</sub> SO <sub>4</sub> | ICP-MS, calibration with pure metals or pure chemicals      |
| 11 | Fe, Cu, Mn, Cr, Ni, Ti, B, Be, Bi, Ca, Ga, In, P, Pb                | 0.5 g | Dissolution with HCl  | ICP-OES, calibration with pure metals or pure chemicals     |
|    | Ag  | 0.5 g | Dissolution with NaOH   | ICP-OES, calibration with pure metals or pure chemicals     |
| 12 | Bi, In  | 1 g   | Dissolution with HCl  | ICP-OES   |
| 13 | Si  | 0.5 g | Dissolution with NaOH   | ICP-OES, calibration with commercial mono element solutions |
|    | Fe, Cu, Mn, Mg, Cr, Ni, Zn, Ti, Zr, B, Be, Bi, Ga, In, P, Pb, Sn, V | 0.5 g | Dissolution with HCl/H <sub>2</sub> O <sub>2</sub>                | ICP-OES, calibration with commercial mono element solutions |

## 5.2 Analytical results and statistical evaluation

The analytical results of the certification interlaboratory comparison are listed in Tables 24 to 44. These tables show the single results ( $M_i$ ) of each laboratory, the respective laboratory mean ( $M$ ) together with the relative intralaboratory standard deviation ( $s_{rel}$ ) and in addition the mean repeatability standard deviation ( $\bar{s}_i$ ) over all laboratories. The continuous line marks the certified value (mean of the laboratories' means), the broken lines mark the standard deviation, calculated from the laboratories' means. In the related figures for each laboratory its mean value and single standard deviation is given.

The statistical evaluation of the data was performed using the software program SoftCRM 1.2.2. [7]. The following results were received:

Table 3: Outcome of statistical tests of results obtained for Si

|  |                      |
|--|----------------------|
| Number of data sets                                    | 11                   |
| Snedecor-F-Test and Bartlett-Test                      | Pooling not allowed  |
| Dixon ( $\alpha = 0.05$ )                              | ---                  |
| Dixon ( $\alpha = 0.01$ )                              | ---                  |
| Nalimov ( $\alpha = 0.05$ )                            | ---                  |
| Nalimov ( $\alpha = 0.01$ )                            | ---                  |
| Grubbs ( $\alpha = 0.05$ )                             | ---                  |
| Grubbs ( $\alpha = 0.01$ )                             | ---                  |
| Grubbs Pair ( $\alpha = 0.05$ )                        | ---                  |
| Grubbs Pair ( $\alpha = 0.01$ )                        | ---                  |
| Cochran  | ---                  |
| Kolmogorov-Smirnov-Lilliefors Test ( $\alpha = 0.05$ ) | Distribution: normal |
| Kolmogorov-Smirnov-Lilliefors Test ( $\alpha = 0.01$ ) | Distribution: normal |

Table 4: Outcome of statistical tests of results obtained for Fe

|  |                          |
|--|--------------------------|
| Number of data sets                                    | 15                       |
| Snedecor-F-Test and Bartlett-Test                      | Pooling not allowed      |
| Dixon ( $\alpha = 0.05$ )                              | Laboratories 8 and 9/l-s |
| Dixon ( $\alpha = 0.01$ )                              | ---                      |
| Nalimov ( $\alpha = 0.05$ )                            | Laboratories 8 and 9/l-s |
| Nalimov ( $\alpha = 0.01$ )                            | Laboratory 8             |
| Grubbs ( $\alpha = 0.05$ )                             | Laboratory 8             |
| Grubbs ( $\alpha = 0.01$ )                             | ---                      |
| Grubbs Pair ( $\alpha = 0.05$ )                        | ---                      |
| Grubbs Pair ( $\alpha = 0.01$ )                        | ---                      |
| Cochran  | ---                      |
| Kolmogorov-Smirnov-Lilliefors Test ( $\alpha = 0.05$ ) | Distribution: normal     |
| Kolmogorov-Smirnov-Lilliefors Test ( $\alpha = 0.01$ ) | Distribution: normal     |

The outlying values (Lab. 8 and 9/l-s) were not removed.

Table 5: Outcome of statistical tests of results obtained for Cu

|  |                          |
|--|--------------------------|
| Number of data sets                                    | 13                       |
| Snedecor-F-Test and Bartlett-Test                      | Pooling not allowed      |
| Dixon ( $\alpha = 0.05$ )                              | ---                      |
| Dixon ( $\alpha = 0.01$ )                              | ---                      |
| Nalimov ( $\alpha = 0.05$ )                            | Laboratory 10/l-a        |
| Nalimov ( $\alpha = 0.01$ )                            | ---                      |
| Grubbs ( $\alpha = 0.05$ )                             | ---                      |
| Grubbs ( $\alpha = 0.01$ )                             | ---                      |
| Grubbs Pair ( $\alpha = 0.05$ )                        | ---                      |
| Grubbs Pair ( $\alpha = 0.01$ )                        | ---                      |
| Cochran  | ---                      |
| Kolmogorov-Smirnov-Lilliefors Test ( $\alpha = 0.05$ ) | Distribution: not normal |
| Kolmogorov-Smirnov-Lilliefors Test ( $\alpha = 0.01$ ) | Distribution: not normal |

The outlying value (Lab. 10/l-a) was not removed.

Table 5: Outcome of statistical tests of results obtained for Mn

|  |                      |
|--|----------------------|
| Number of data sets                                    | 14                   |
| Snedecor-F-Test and Bartlett-Test                      | Pooling not allowed  |
| Dixon ( $\alpha = 0.05$ )                              | ---                  |
| Dixon ( $\alpha = 0.01$ )                              | ---                  |
| Nalimov ( $\alpha = 0.05$ )                            | Laboratory 9/A-s     |
| Nalimov ( $\alpha = 0.01$ )                            | Laboratory 9/A-s     |
| Grubbs ( $\alpha = 0.05$ )                             | Laboratory 9/A-s     |
| Grubbs ( $\alpha = 0.01$ )                             | ---                  |
| Grubbs Pair ( $\alpha = 0.05$ )                        | ---                  |
| Grubbs Pair ( $\alpha = 0.01$ )                        | ---                  |
| Cochran  | ---                  |
| Kolmogorov-Smirnov-Lilliefors Test ( $\alpha = 0.05$ ) | Distribution: normal |
| Kolmogorov-Smirnov-Lilliefors Test ( $\alpha = 0.01$ ) | Distribution: normal |

The outlying value (Lab. 9/A-s) was removed.

Table 5a: Outcome of statistical tests of results obtained for Mn (after removal of outlier)

|  |                      |
|--|----------------------|
| Number of data sets                                    | 13                   |
| Snedecor-F-Test and Bartlett-Test                      | Pooling not allowed  |
| Dixon ( $\alpha = 0.05$ )                              | ---                  |
| Dixon ( $\alpha = 0.01$ )                              | ---                  |
| Nalimov ( $\alpha = 0.05$ )                            | ---                  |
| Nalimov ( $\alpha = 0.01$ )                            | ---                  |
| Grubbs ( $\alpha = 0.05$ )                             | ---                  |
| Grubbs ( $\alpha = 0.01$ )                             | ---                  |
| Grubbs Pair ( $\alpha = 0.05$ )                        | ---                  |
| Grubbs Pair ( $\alpha = 0.01$ )                        | ---                  |
| Cochran  | ---                  |
| Kolmogorov-Smirnov-Lilliefors Test ( $\alpha = 0.05$ ) | Distribution: normal |
| Kolmogorov-Smirnov-Lilliefors Test ( $\alpha = 0.01$ ) | Distribution: normal |

Table 6: Outcome of statistical tests of results obtained for Mg

|  |                      |
|--|----------------------|
| Number of data sets                                    | 13                   |
| Snedecor-F-Test and Bartlett-Test                      | Pooling not allowed  |
| Dixon ( $\alpha = 0.05$ )                              | ---                  |
| Dixon ( $\alpha = 0.01$ )                              | ---                  |
| Nalimov ( $\alpha = 0.05$ )                            | ---                  |
| Nalimov ( $\alpha = 0.01$ )                            | ---                  |
| Grubbs ( $\alpha = 0.05$ )                             | ---                  |
| Grubbs ( $\alpha = 0.01$ )                             | ---                  |
| Grubbs Pair ( $\alpha = 0.05$ )                        | ---                  |
| Grubbs Pair ( $\alpha = 0.01$ )                        | ---                  |
| Cochran  | ---                  |
| Kolmogorov-Smirnov-Lilliefors Test ( $\alpha = 0.05$ ) | Distribution: normal |
| Kolmogorov-Smirnov-Lilliefors Test ( $\alpha = 0.01$ ) | Distribution: normal |

Table 7: Outcome of statistical tests of results obtained for Cr

|  |                      |
|--|----------------------|
| Number of data sets                                    | 14                   |
| Snedecor-F-Test and Bartlett-Test                      | Pooling not allowed  |
| Dixon ( $\alpha = 0.05$ )                              | ---                  |
| Dixon ( $\alpha = 0.01$ )                              | ---                  |
| Nalimov ( $\alpha = 0.05$ )                            | Laboratory 8/INAA    |
| Nalimov ( $\alpha = 0.01$ )                            | ---                  |
| Grubbs ( $\alpha = 0.05$ )                             | ---                  |
| Grubbs ( $\alpha = 0.01$ )                             | ---                  |
| Grubbs Pair ( $\alpha = 0.05$ )                        | ---                  |
| Grubbs Pair ( $\alpha = 0.01$ )                        | ---                  |
| Cochran  | ---                  |
| Kolmogorov-Smirnov-Lilliefors Test ( $\alpha = 0.05$ ) | Distribution: normal |
| Kolmogorov-Smirnov-Lilliefors Test ( $\alpha = 0.01$ ) | Distribution: normal |

The outlying value (Lab. 8/INAA) was not removed.

Table 8: Outcome of statistical tests of results obtained for Ni

|  |                          |
|--|--------------------------|
| Number of data sets                                    | 14                       |
| Snedecor-F-Test and Bartlett-Test                      | Pooling not allowed      |
| Dixon ( $\alpha = 0.05$ )                              | Laboratories 8 and 9/I-s |
| Dixon ( $\alpha = 0.01$ )                              | ---                      |
| Nalimov ( $\alpha = 0.05$ )                            | Laboratories 8 and 9/I-s |
| Nalimov ( $\alpha = 0.01$ )                            | ---                      |
| Grubbs ( $\alpha = 0.05$ )                             | ---                      |
| Grubbs ( $\alpha = 0.01$ )                             | ---                      |
| Grubbs Pair ( $\alpha = 0.05$ )                        | ---                      |
| Grubbs Pair ( $\alpha = 0.01$ )                        | ---                      |
| Cochran  | ---                      |
| Kolmogorov-Smirnov-Lilliefors Test ( $\alpha = 0.05$ ) | Distribution: normal     |
| Kolmogorov-Smirnov-Lilliefors Test ( $\alpha = 0.01$ ) | Distribution: normal     |

The outlying values (Lab. 8 and 9/I-s) were not removed.

Table 9: Outcome of statistical tests of results obtained for Zn

|  |                      |
|--|----------------------|
| Number of data sets                                    | 13                   |
| Snedecor-F-Test and Bartlett-Test                      | Pooling not allowed  |
| Dixon ( $\alpha = 0.05$ )                              | ---                  |
| Dixon ( $\alpha = 0.01$ )                              | ---                  |
| Nalimov ( $\alpha = 0.05$ )                            | Laboratory 8/XRF     |
| Nalimov ( $\alpha = 0.01$ )                            | ---                  |
| Grubbs ( $\alpha = 0.05$ )                             | ---                  |
| Grubbs ( $\alpha = 0.01$ )                             | ---                  |
| Grubbs Pair ( $\alpha = 0.05$ )                        | ---                  |
| Grubbs Pair ( $\alpha = 0.01$ )                        | ---                  |
| Cochran  | ---                  |
| Kolmogorov-Smirnov-Lilliefors Test ( $\alpha = 0.05$ ) | Distribution: normal |
| Kolmogorov-Smirnov-Lilliefors Test ( $\alpha = 0.01$ ) | Distribution: normal |

The outlying value (Lab. 8/XRF) was not removed.

Table 10: Outcome of statistical tests of results obtained for Ti

|  |                      |
|--|----------------------|
| Number of data sets                                    | 14                   |
| Snedecor-F-Test and Bartlett-Test                      | Pooling not allowed  |
| Dixon ( $\alpha = 0.05$ )                              | ---                  |
| Dixon ( $\alpha = 0.01$ )                              | ---                  |
| Nalimov ( $\alpha = 0.05$ )                            | Laboratory 9         |
| Nalimov ( $\alpha = 0.01$ )                            | ---                  |
| Grubbs ( $\alpha = 0.05$ )                             | ---                  |
| Grubbs ( $\alpha = 0.01$ )                             | ---                  |
| Grubbs Pair ( $\alpha = 0.05$ )                        | ---                  |
| Grubbs Pair ( $\alpha = 0.01$ )                        | ---                  |
| Cochran  | ---                  |
| Kolmogorov-Smirnov-Lilliefors Test ( $\alpha = 0.05$ ) | Distribution: normal |
| Kolmogorov-Smirnov-Lilliefors Test ( $\alpha = 0.01$ ) | Distribution: normal |

The outlying value (Lab. 9) was not removed.

Table 11: Outcome of statistical tests of results obtained for Zr

|  |                      |
|--|----------------------|
| Number of data sets                                    | 11                   |
| Snedecor-F-Test and Bartlett-Test                      | Pooling not allowed  |
| Dixon ( $\alpha = 0.05$ )                              | ---                  |
| Dixon ( $\alpha = 0.01$ )                              | ---                  |
| Nalimov ( $\alpha = 0.05$ )                            | Laboratories 8 and 9 |
| Nalimov ( $\alpha = 0.01$ )                            | ---                  |
| Grubbs ( $\alpha = 0.05$ )                             | ---                  |
| Grubbs ( $\alpha = 0.01$ )                             | ---                  |
| Grubbs Pair ( $\alpha = 0.05$ )                        | ---                  |
| Grubbs Pair ( $\alpha = 0.01$ )                        | ---                  |
| Cochran  | ---                  |
| Kolmogorov-Smirnov-Lilliefors Test ( $\alpha = 0.05$ ) | Distribution: normal |
| Kolmogorov-Smirnov-Lilliefors Test ( $\alpha = 0.01$ ) | Distribution: normal |

The outlying values (Lab. 8 and 9) were not removed.

Table 12: Outcome of statistical tests of results obtained for Ag

|  |                          |
|--|--------------------------|
| Number of data sets                                    | 11                       |
| Snedecor-F-Test and Bartlett-Test                      | Pooling not allowed      |
| Dixon ( $\alpha = 0.05$ )                              | ---                      |
| Dixon ( $\alpha = 0.01$ )                              | ---                      |
| Nalimov ( $\alpha = 0.05$ )                            | Laboratory 1             |
| Nalimov ( $\alpha = 0.01$ )                            | ---                      |
| Grubbs ( $\alpha = 0.05$ )                             | ---                      |
| Grubbs ( $\alpha = 0.01$ )                             | ---                      |
| Grubbs Pair ( $\alpha = 0.05$ )                        | ---                      |
| Grubbs Pair ( $\alpha = 0.01$ )                        | ---                      |
| Cochran  | ---                      |
| Kolmogorov-Smirnov-Lilliefors Test ( $\alpha = 0.05$ ) | Distribution: not normal |
| Kolmogorov-Smirnov-Lilliefors Test ( $\alpha = 0.01$ ) | Distribution: normal     |

The outlying value (Lab. 1) was not removed.



Table 13: Outcome of statistical tests of results obtained for B

|  |                      |
|--|----------------------|
| Number of data sets                                    | 7                    |
| Snedecor-F-Test and Bartlett-Test                      | Pooling not allowed  |
| Dixon ( $\alpha = 0.05$ )                              | ---                  |
| Dixon ( $\alpha = 0.01$ )                              | ---                  |
| Nalimov ( $\alpha = 0.05$ )                            | ---                  |
| Nalimov ( $\alpha = 0.01$ )                            | ---                  |
| Grubbs ( $\alpha = 0.05$ )                             | ---                  |
| Grubbs ( $\alpha = 0.01$ )                             | ---                  |
| Grubbs Pair ( $\alpha = 0.05$ )                        | ---                  |
| Grubbs Pair ( $\alpha = 0.01$ )                        | ---                  |
| Cochran  | ---                  |
| Kolmogorov-Smirnov-Lilliefors Test ( $\alpha = 0.05$ ) | Distribution: normal |
| Kolmogorov-Smirnov-Lilliefors Test ( $\alpha = 0.01$ ) | Distribution: normal |

Table 14: Outcome of statistical tests of results obtained for Be

|  |                      |
|--|----------------------|
| Number of data sets                                    | 10                   |
| Snedecor-F-Test and Bartlett-Test                      | Pooling not allowed  |
| Dixon ( $\alpha = 0.05$ )                              | ---                  |
| Dixon ( $\alpha = 0.01$ )                              | ---                  |
| Nalimov ( $\alpha = 0.05$ )                            | ---                  |
| Nalimov ( $\alpha = 0.01$ )                            | ---                  |
| Grubbs ( $\alpha = 0.05$ )                             | ---                  |
| Grubbs ( $\alpha = 0.01$ )                             | ---                  |
| Grubbs Pair ( $\alpha = 0.05$ )                        | ---                  |
| Grubbs Pair ( $\alpha = 0.01$ )                        | ---                  |
| Cochran  | ---                  |
| Kolmogorov-Smirnov-Lilliefors Test ( $\alpha = 0.05$ ) | Distribution: normal |
| Kolmogorov-Smirnov-Lilliefors Test ( $\alpha = 0.01$ ) | Distribution: normal |

Table 15: Outcome of statistical tests of results obtained for Bi

|  |                      |
|--|----------------------|
| Number of data sets                                    | 8                    |
| Snedecor-F-Test and Bartlett-Test                      | Pooling not allowed  |
| Dixon ( $\alpha = 0.05$ )                              | ---                  |
| Dixon ( $\alpha = 0.01$ )                              | ---                  |
| Nalimov ( $\alpha = 0.05$ )                            | ---                  |
| Nalimov ( $\alpha = 0.01$ )                            | ---                  |
| Grubbs ( $\alpha = 0.05$ )                             | ---                  |
| Grubbs ( $\alpha = 0.01$ )                             | ---                  |
| Grubbs Pair ( $\alpha = 0.05$ )                        | ---                  |
| Grubbs Pair ( $\alpha = 0.01$ )                        | ---                  |
| Cochran  | ---                  |
| Kolmogorov-Smirnov-Lilliefors Test ( $\alpha = 0.05$ ) | Distribution: normal |
| Kolmogorov-Smirnov-Lilliefors Test ( $\alpha = 0.01$ ) | Distribution: normal |

Table 16: Outcome of statistical tests of results obtained for Ca

|  |                      |
|--|----------------------|
| Number of data sets                                    | 4                    |
| Snedecor-F-Test and Bartlett-Test                      | Pooling not allowed  |
| Dixon ( $\alpha = 0.05$ )                              | ---                  |
| Dixon ( $\alpha = 0.01$ )                              | ---                  |
| Nalimov ( $\alpha = 0.05$ )                            | Laboratory 11        |
| Nalimov ( $\alpha = 0.01$ )                            | ---                  |
| Grubbs ( $\alpha = 0.05$ )                             | ---                  |
| Grubbs ( $\alpha = 0.01$ )                             | ---                  |
| Grubbs Pair ( $\alpha = 0.05$ )                        | ---                  |
| Grubbs Pair ( $\alpha = 0.01$ )                        | ---                  |
| Cochran  | ---                  |
| Kolmogorov-Smirnov-Lilliefors Test ( $\alpha = 0.05$ ) | Distribution: normal |
| Kolmogorov-Smirnov-Lilliefors Test ( $\alpha = 0.01$ ) | Distribution: normal |

The outlying value (Lab. 11) was not removed.

Table 17: Outcome of statistical tests of results obtained for Ga

|  |                      |
|--|----------------------|
| Number of data sets                                    | 13                   |
| Snedecor-F-Test and Bartlett-Test                      | Pooling not allowed  |
| Dixon ( $\alpha = 0.05$ )                              | ---                  |
| Dixon ( $\alpha = 0.01$ )                              | ---                  |
| Nalimov ( $\alpha = 0.05$ )                            | ---                  |
| Nalimov ( $\alpha = 0.01$ )                            | ---                  |
| Grubbs ( $\alpha = 0.05$ )                             | ---                  |
| Grubbs ( $\alpha = 0.01$ )                             | ---                  |
| Grubbs Pair ( $\alpha = 0.05$ )                        | ---                  |
| Grubbs Pair ( $\alpha = 0.01$ )                        | ---                  |
| Cochran  | ---                  |
| Kolmogorov-Smirnov-Lilliefors Test ( $\alpha = 0.05$ ) | Distribution: normal |
| Kolmogorov-Smirnov-Lilliefors Test ( $\alpha = 0.01$ ) | Distribution: normal |

Table 18: Outcome of statistical tests of results obtained for In

|  |                      |
|--|----------------------|
| Number of data sets                                    | 11                   |
| Snedecor-F-Test and Bartlett-Test                      | Pooling not allowed  |
| Dixon ( $\alpha = 0.05$ )                              | ---                  |
| Dixon ( $\alpha = 0.01$ )                              | ---                  |
| Nalimov ( $\alpha = 0.05$ )                            | Laboratory 8         |
| Nalimov ( $\alpha = 0.01$ )                            | ---                  |
| Grubbs ( $\alpha = 0.05$ )                             | ---                  |
| Grubbs ( $\alpha = 0.01$ )                             | ---                  |
| Grubbs Pair ( $\alpha = 0.05$ )                        | ---                  |
| Grubbs Pair ( $\alpha = 0.01$ )                        | ---                  |
| Cochran  | ---                  |
| Kolmogorov-Smirnov-Lilliefors Test ( $\alpha = 0.05$ ) | Distribution: normal |
| Kolmogorov-Smirnov-Lilliefors Test ( $\alpha = 0.01$ ) | Distribution: normal |

The outlying value (Lab. 8) was not removed.

Table 19: Outcome of statistical tests of results obtained for P

|  |                      |
|--|----------------------|
| Number of data sets                                    | 5                    |
| Snedecor-F-Test and Bartlett-Test                      | Pooling not allowed  |
| Dixon ( $\alpha = 0.05$ )                              | ---                  |
| Dixon ( $\alpha = 0.01$ )                              | ---                  |
| Nalimov ( $\alpha = 0.05$ )                            | ---                  |
| Nalimov ( $\alpha = 0.01$ )                            | ---                  |
| Grubbs ( $\alpha = 0.05$ )                             | ---                  |
| Grubbs ( $\alpha = 0.01$ )                             | ---                  |
| Grubbs Pair ( $\alpha = 0.05$ )                        | ---                  |
| Grubbs Pair ( $\alpha = 0.01$ )                        | ---                  |
| Cochran  | ---                  |
| Kolmogorov-Smirnov-Lilliefors Test ( $\alpha = 0.05$ ) | Distribution: normal |
| Kolmogorov-Smirnov-Lilliefors Test ( $\alpha = 0.01$ ) | Distribution: normal |

Table 20: Outcome of statistical tests of results obtained for Pb

|  |                          |
|--|--------------------------|
| Number of data sets                                    | 10                       |
| Snedecor-F-Test and Bartlett-Test                      | Pooling not allowed      |
| Dixon ( $\alpha = 0.05$ )                              | ---                      |
| Dixon ( $\alpha = 0.01$ )                              | ---                      |
| Nalimov ( $\alpha = 0.05$ )                            | Laboratory 5             |
| Nalimov ( $\alpha = 0.01$ )                            | ---                      |
| Grubbs ( $\alpha = 0.05$ )                             | ---                      |
| Grubbs ( $\alpha = 0.01$ )                             | ---                      |
| Grubbs Pair ( $\alpha = 0.05$ )                        | ---                      |
| Grubbs Pair ( $\alpha = 0.01$ )                        | ---                      |
| Cochran  | ---                      |
| Kolmogorov-Smirnov-Lilliefors Test ( $\alpha = 0.05$ ) | Distribution: not normal |
| Kolmogorov-Smirnov-Lilliefors Test ( $\alpha = 0.01$ ) | Distribution: normal     |

The outlying value (Lab. 5) was not removed.

Table 21: Outcome of statistical tests of results obtained for Sn

|  |                          |
|--|--------------------------|
| Number of data sets                                    | 11                       |
| Snedecor-F-Test and Bartlett-Test                      | Pooling not allowed      |
| Dixon ( $\alpha = 0.05$ )                              | Laboratory 8             |
| Dixon ( $\alpha = 0.01$ )                              | ---                      |
| Nalimov ( $\alpha = 0.05$ )                            | Laboratory 8             |
| Nalimov ( $\alpha = 0.01$ )                            | Laboratory 8             |
| Grubbs ( $\alpha = 0.05$ )                             | Laboratory 8             |
| Grubbs ( $\alpha = 0.01$ )                             | ---                      |
| Grubbs Pair ( $\alpha = 0.05$ )                        | ---                      |
| Grubbs Pair ( $\alpha = 0.01$ )                        | ---                      |
| Cochran  | ---                      |
| Kolmogorov-Smirnov-Lilliefors Test ( $\alpha = 0.05$ ) | Distribution: not normal |
| Kolmogorov-Smirnov-Lilliefors Test ( $\alpha = 0.01$ ) | Distribution: normal     |

The outlying value (Lab. 8) was removed.

Table 21a: Outcome of statistical tests of results obtained for Sn (after removal of outlier)

|  |                      |
|--|----------------------|
| Number of data sets                                    | 10                   |
| Snedecor-F-Test and Bartlett-Test                      | Pooling not allowed  |
| Dixon ( $\alpha = 0.05$ )                              | ---                  |
| Dixon ( $\alpha = 0.01$ )                              | ---                  |
| Nalimov ( $\alpha = 0.05$ )                            | Laboratory 3         |
| Nalimov ( $\alpha = 0.01$ )                            | ---                  |
| Grubbs ( $\alpha = 0.05$ )                             | ---                  |
| Grubbs ( $\alpha = 0.01$ )                             | ---                  |
| Grubbs Pair ( $\alpha = 0.05$ )                        | ---                  |
| Grubbs Pair ( $\alpha = 0.01$ )                        | ---                  |
| Cochran  | ---                  |
| Kolmogorov-Smirnov-Lilliefors Test ( $\alpha = 0.05$ ) | Distribution: normal |
| Kolmogorov-Smirnov-Lilliefors Test ( $\alpha = 0.01$ ) | Distribution: normal |

The outlying value (Lab. 3) was not removed.

Table 22: Outcome of statistical tests of results obtained for V

|  |                      |
|--|----------------------|
| Number of data sets                                    | 11                   |
| Snedecor-F-Test and Bartlett-Test                      | Pooling not allowed  |
| Dixon ( $\alpha = 0.05$ )                              | ---                  |
| Dixon ( $\alpha = 0.01$ )                              | ---                  |
| Nalimov ( $\alpha = 0.05$ )                            | ---                  |
| Nalimov ( $\alpha = 0.01$ )                            | ---                  |
| Grubbs ( $\alpha = 0.05$ )                             | ---                  |
| Grubbs ( $\alpha = 0.01$ )                             | ---                  |
| Grubbs Pair ( $\alpha = 0.05$ )                        | ---                  |
| Grubbs Pair ( $\alpha = 0.01$ )                        | ---                  |
| Cochran  | ---                  |
| Kolmogorov-Smirnov-Lilliefors Test ( $\alpha = 0.05$ ) | Distribution: normal |
| Kolmogorov-Smirnov-Lilliefors Test ( $\alpha = 0.01$ ) | Distribution: normal |

The certified mass fractions of all elements were calculated as mean of the accepted data sets. These values are given in Table 23.

The respective combined uncertainties were calculated from the contribution resulting from the certification interlaboratory comparison ( $u_{ilc}$ ) and the uncertainty contributions from possible inhomogeneity of the material using Equation (5).

$$u_{\text{combined}} = \sqrt{u_{ilc}^2 + u_{bb}^2(1) + u_{bb}^2(2)} \quad (5)$$

with

$$u_{ilc} = \sqrt{\frac{s_M^2}{n}} : \text{uncertainty contribution resulting from interlaboratory comparison}$$

$u_{bb}(1)$  = inhomogeneity contribution due to a possible composition gradient over the length of the rod

$u_{bb}(2)$  = inhomogeneity contribution due to a possible composition gradient from the outer part of the disc to its centre

Table 23: Uncertainty calculation

|    | <i>M</i> | <i>n</i> | <i>s<sub>M</sub></i> | <i>u<sub>bb</sub></i> (1) | <i>u<sub>bb</sub></i> (2) | <i>u<sub>combined</sub></i> | <i>U</i> |
|----|----------|----------|----------------------|---------------------------|---------------------------|-----------------------------|----------|
| Fe | 0.1115   | 15       | 0.0033               | 0.00103                   | 0.00051                   | 0.00144                     | 0.00286  |
| Cu | 1.77     | 13       | 0.015                | 0.00599                   | 0.0264                    | 0.0274                      | 0.0548   |
| Mg | 2.387    | 13       | 0.067                | 0.0161                    | 0.023                     | 0.0337                      | 0.0674   |
| Cr | 0.1414   | 14       | 0.0016               | 0.00042                   | 0.00105                   | 0.00121                     | 0.00242  |
| Zn | 6.928    | 13       | 0.127                | 0.0214                    | 0.1199                    | 0.127                       | 0.254    |
| Zr | 0.1305   | 11       | 0.0066               | 0.00062                   | 0.00291                   | 0.00358                     | 0.00716  |
|    |          |          |                      |                           |                           |                             |          |
| Si | 271      | 11       | 23                   | 5.4                       | 5.9                       | 10.59                       | 21.18    |
| Mn | 912      | 13       | 12                   | 3.3                       | 8.0                       | 9.23                        | 18.45    |
| Ni | 359      | 15       | 15                   | 2                         | 5.5                       | 6.99                        | 13.98    |
| Ti | 952      | 14       | 39                   | 73                        | 25                        | 77.8                        | 155.6    |
| Ag | 72.5     | 11       | 7.8                  | 0.3                       | 0.57                      | 2.44                        | 4.88     |
| Be | 10.08    | 10       | 1.9                  | 0.2                       | 2.7                       | 2.79                        | 5.58     |
| Ga | 182.6    | 13       | 16                   | 3.1                       | 2.36                      | 5.91                        | 11.82    |
| In | 161.8    | 12       | 7.5                  | 0.6                       | 4.6                       | 5.11                        | 10.21    |
| Pb | 48.1     | 10       | 2.9                  | 0.3                       | 0.57                      | 1.12                        | 2.25     |
| Sn | 238      | 10       | 8                    | 0.3                       | 8.4                       | 8.78                        | 17.6     |
| V  | 104.9    | 11       | 2.9                  | 1.8                       | 2.73                      | 3.39                        | 6.77     |
| B  | 37.2     | 7        | 6.66                 | 14.9                      | 4.57                      | 15.79                       | 31.6     |
| Ca | 6.05     | 4        | 1.25                 | 0.5                       | 0.4                       | 0.90                        | 2.69     |
| P  | 26.7     | 5        | 7.4                  | 1.8                       | 2.9                       | 4.73                        | 14.2     |

Note: For lead the same behaviour as for Ag was assumed

The expanded uncertainties *U* were calculated by multiplication of *u<sub>combined</sub>* with a coverage factor of *k* = 2 (*k* = 3 for Ca and P) using Equation 6.

$$U = k \cdot u_{\text{combined}} \quad (6)$$

The calculated mass fractions and their respective expanded uncertainties are given on Page 3 of this report.

| Lab./Meth.                | 6/l-a         | 5/l-a         | 4/l-a         | 8/XRF         | 2/l-s(R)      | 1/l-a         | 3/l-s(R)      | 2/P           | 10/P          | 13/l-a        | 10/l-a        |  | N             |
|---------------------------|---------------|---------------|---------------|---------------|---------------|---------------|---------------|---------------|---------------|---------------|---------------|--|---------------|
| $M_i$ [%]                 | 0.0234        | 0.0250        | 0.0252        | 0.0292        | 0.0254        | 0.0264        | 0.0287        | 0.0289        | 0.0285        | 0.0300        | 0.0301        |  | 11            |
|                           | 0.0235        | 0.0250        | 0.0249        | 0.0254        | 0.0259        | 0.0268        | 0.0287        | 0.0297        | 0.0297        | 0.0310        | 0.0317        |  |               |
|                           | 0.0220        | 0.0240        | 0.0249        | 0.0234        | 0.0251        | 0.0266        | 0.0282        | 0.0291        | 0.0296        | 0.0290        | 0.0293        |  |               |
|                           | 0.0234        | 0.0250        | 0.0252        | 0.0225        | 0.0258        | 0.0263        | 0.0279        | 0.0287        | 0.0304        | 0.0290        | 0.0296        |  |               |
|                           | 0.0242        | 0.0270        | 0.0252        |               | 0.0282        | 0.0265        |               | 0.0283        | 0.0284        | 0.0310        | 0.0318        |  |               |
|                           | 0.0244        | 0.0240        | 0.0253        |               |               | 0.0265        |               | 0.0285        | 0.0279        | 0.0290        | 0.0290        |  |               |
| <b><math>M</math> [%]</b> | <b>0.0235</b> | <b>0.0250</b> | <b>0.0251</b> | <b>0.0251</b> | <b>0.0261</b> | <b>0.0265</b> | <b>0.0284</b> | <b>0.0289</b> | <b>0.0291</b> | <b>0.0298</b> | <b>0.0303</b> |  | <b>0.0271</b> |
| $s_M$ [%]                 | 0.0008        | 0.0011        | 0.0001        | 0.0030        | 0.0012        | 0.0001        | 0.0004        | 0.0005        | 0.0010        | 0.0010        | 0.0012        |  | 0.0023        |
| $\bar{s}_i$ [%]           |               |               |               |               |               |               |               |               |               |               |               |  | 0.0012        |
| $s_{rel}$                 | 0.03597       | 0.04382       | 0.00518       | 0.11841       | 0.04707       | 0.00563       | 0.01391       | 0.01706       | 0.03308       | 0.03296       | 0.04026       |  | 0.08488       |

22

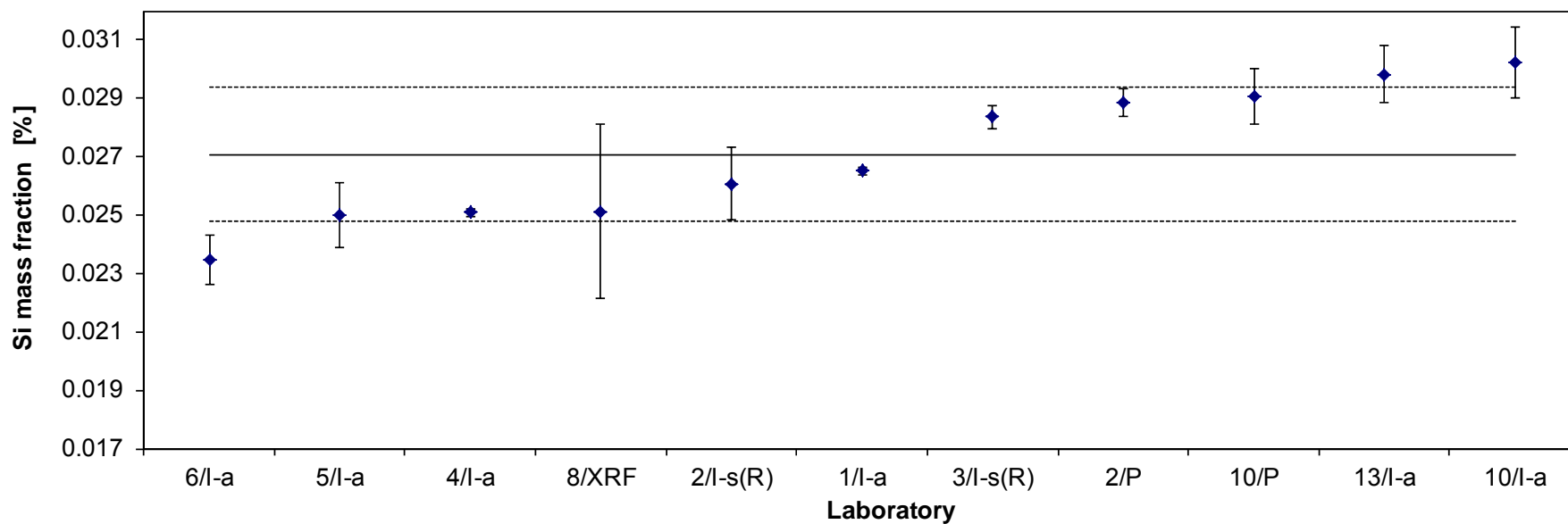


Table 24: Results for Si

| Lab./Meth. | 9/l-s(R)      | 9/A-s(R)      | 6/l-s         | 11/l          | 6/l-a         | 3/l-s         | 4/l-a         | 10/l-s        | 2/l-s         | 1/l-a         | 8/INAA        | 5/l-a         | 13/l-s        | 10/l-a        | 8/XRF         |  | N             |
|------------|---------------|---------------|---------------|---------------|---------------|---------------|---------------|---------------|---------------|---------------|---------------|---------------|---------------|---------------|---------------|--|---------------|
| $M_i$ [%]  | 0.1047        | 0.1062        | 0.1088        | 0.1107        | 0.1100        | 0.1107        | 0.1118        | 0.1111        | 0.1146        | 0.113         | 0.1137        | 0.1163        | 0.114         | 0.1149        | 0.1209        |  | 15            |
|            | 0.1050        | 0.1061        | 0.1106        | 0.1108        | 0.1110        | 0.1095        | 0.1115        | 0.1104        | 0.1124        | 0.113         | 0.1114        | 0.1106        | 0.112         | 0.1164        | 0.1193        |  |               |
|            | 0.1054        | 0.1070        | 0.1103        | 0.1089        | 0.1110        | 0.1103        | 0.1109        | 0.1121        | 0.1114        | 0.112         | 0.1170        | 0.1145        | 0.113         | 0.1131        | 0.1227        |  |               |
|            |               |               |               | 0.1093        |               | 0.1115        | 0.1112        | 0.1115        | 0.1113        | 0.112         | 0.1106        | 0.1110        | 0.113         | 0.1138        | 0.1156        |  |               |
|            |               |               | 0.1075        |               | 0.1140        | 0.1112        | 0.1119        | 0.1112        | 0.1112        | 0.113         | 0.1107        | 0.1112        | 0.114         | 0.1132        |               |  |               |
|            |               |               | 0.1130        |               | 0.1108        | 0.1116        | 0.1117        | 0.1126        | 0.112         | 0.112         | 0.1105        | 0.1121        | 0.114         | 0.1131        |               |  |               |
| $M$ [%]    | <b>0.1050</b> | <b>0.1064</b> | <b>0.1099</b> | <b>0.1100</b> | <b>0.1107</b> | <b>0.1111</b> | <b>0.1114</b> | <b>0.1115</b> | <b>0.1123</b> | <b>0.1123</b> | <b>0.1123</b> | <b>0.1126</b> | <b>0.1133</b> | <b>0.1141</b> | <b>0.1196</b> |  | <b>0.1115</b> |
| $s_M$ [%]  | 0.0004        | 0.0005        | 0.0010        | 0.0019        | 0.0006        | 0.0016        | 0.0003        | 0.0006        | 0.0013        | 0.0006        | 0.0026        | 0.0023        | 0.0008        | 0.0013        | 0.0030        |  | 0.0033        |
| $s_i$ [%]  |               |               |               |               |               |               |               |               |               |               |               |               |               |               |               |  | 0.0015        |
| $s_{rel}$  | 0.00334       | 0.00463       | 0.00877       | 0.01728       | 0.00522       | 0.01396       | 0.00301       | 0.00555       | 0.01154       | 0.00514       | 0.02306       | 0.02028       | 0.00720       | 0.01165       | 0.02542       |  | 0.02955       |

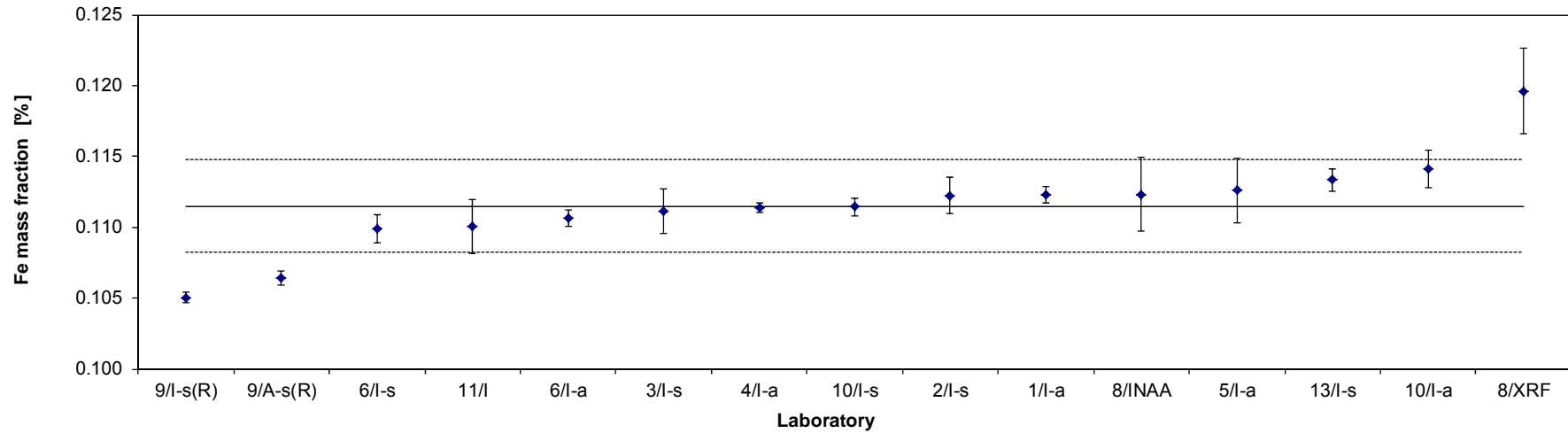


Table 25: Results for Fe

| Lab./Meth.                | 11/l-s        | 5/l-a         | 6/l-s         | 13/l-s        | 10/l-s        | 4/l-a         | 2/l-s         | 6/l-a         | 3/l-s         | 1/l-a         | 9/A           | 8/XRF         | 10/l-a        |  | N             |
|---------------------------|---------------|---------------|---------------|---------------|---------------|---------------|---------------|---------------|---------------|---------------|---------------|---------------|---------------|--|---------------|
| $M_i$ [%]                 | 1.728         | 1.770         | 1.750         | 1.760         | 1.762         | 1.7652        | 1.774         | 1.760         | 1.759         | 1.774         | 1.7600        | 1.806         | 1.822         |  | 13            |
|                           | 1.715         | 1.763         | 1.760         | 1.770         | 1.751         | 1.7620        | 1.750         | 1.770         | 1.755         | 1.788         | 1.7770        | 1.782         | 1.821         |  |               |
|                           | 1.737         | 1.747         | 1.770         | 1.760         | 1.761         | 1.7652        | 1.705         | 1.770         | 1.772         | 1.786         | 1.7890        | 1.861         | 1.793         |  |               |
|                           | 1.756         | 1.766         |               | 1.760         | 1.769         | 1.7598        | 1.821         |               | 1.767         | 1.769         | 1.7980        | 1.714         | 1.795         |  |               |
|                           | 1.765         | 1.763         |               | 1.750         | 1.763         | 1.7653        | 1.778         |               | 1.768         | 1.779         | 1.7880        |               | 1.785         |  |               |
|                           | 1.836         | 1.749         |               | 1.760         | 1.760         | 1.7615        | 1.758         |               | 1.780         | 1.768         | 1.8000        |               | 1.791         |  |               |
| <b><math>M</math> [%]</b> | <b>1.7560</b> | <b>1.7594</b> | <b>1.7600</b> | <b>1.7600</b> | <b>1.7610</b> | <b>1.7632</b> | <b>1.7643</b> | <b>1.7667</b> | <b>1.7669</b> | <b>1.7773</b> | <b>1.7853</b> | <b>1.7906</b> | <b>1.8012</b> |  | <b>1.7701</b> |
| $s_M$ [%]                 | 0.0434        | 0.0093        | 0.0100        | 0.0063        | 0.0058        | 0.0024        | 0.0381        | 0.0058        | 0.0088        | 0.0085        | 0.0149        | 0.0611        | 0.0161        |  | 0.0141        |
| $\bar{s}_i$ [%]           |               |               |               |               |               |               |               |               |               |               |               |               |               |  | 0.0248        |
| $s_{rel}$                 | 0.02470       | 0.00526       | 0.00568       | 0.00359       | 0.00331       | 0.00135       | 0.02159       | 0.00327       | 0.00499       | 0.00477       | 0.00834       | 0.03414       | 0.00894       |  | 0.00795       |

24

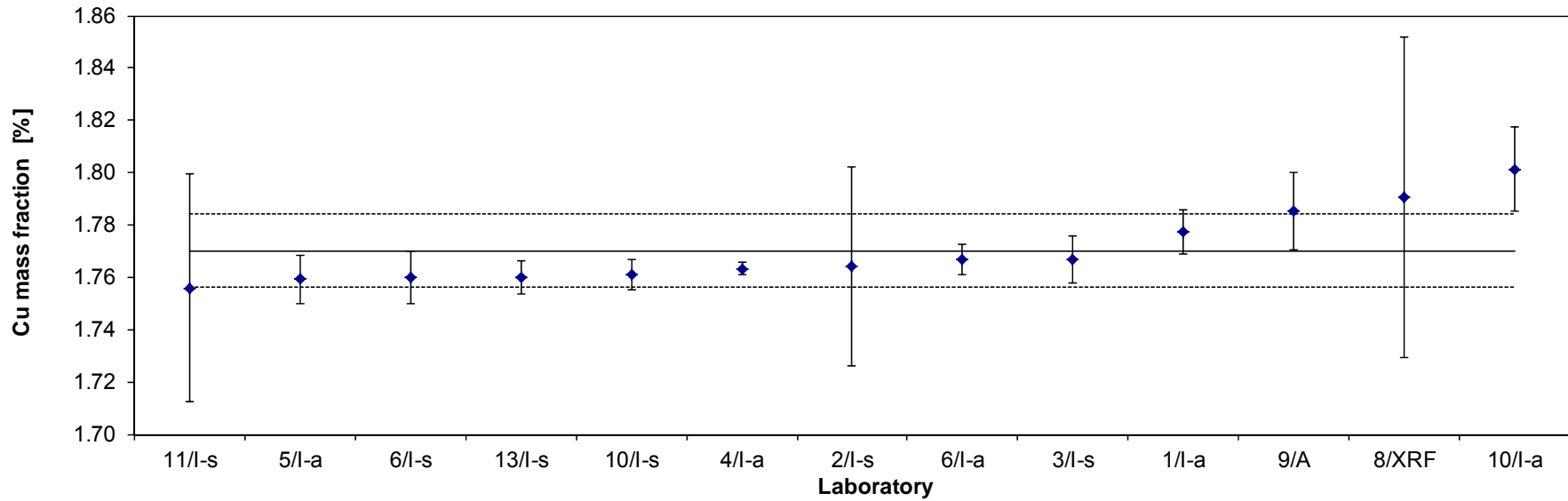


Table 26: Results for Cu



| Lab./Meth.                | 9/A-s         | 9/l-s         | 5/l-a         | 6/l-a         | 6/l-s         | 11/l-s        | 1/l-a         | 3/l-s         | 2/l-s         | 10/l-s        | 4/l-a         | 10/l-a        | 8/INAA        | N             |
|---------------------------|---------------|---------------|---------------|---------------|---------------|---------------|---------------|---------------|---------------|---------------|---------------|---------------|---------------|---------------|
| $M_i$ [%]                 | 0.0868        | 0.0907        | 0.0896        | 0.0897        | 0.0910        | 0.0893        | 0.0906        | 0.0909        | 0.0917        | 0.0915        | 0.0915        | 0.0937        | 0.0933        | 13            |
|                           | 0.0875        | 0.0904        | 0.0904        | 0.0908        | 0.0910        | 0.0898        | 0.0908        | 0.0907        | 0.0916        | 0.0913        | 0.0914        | 0.0938        | 0.0920        |               |
|                           | 0.0861        | 0.0892        | 0.0889        | 0.0911        | 0.0900        | 0.0905        | 0.0908        | 0.0900        | 0.0913        | 0.0915        | 0.0917        | 0.0921        | 0.0937        |               |
|                           | 0.0861        | 0.0877        | 0.0896        |               |               | 0.0906        | 0.0909        | 0.0918        | 0.0916        | 0.0914        | 0.0916        | 0.0927        | 0.0937        |               |
|                           | 0.0864        | 0.0891        | 0.0896        |               |               | 0.0880        | 0.0905        | 0.0913        | 0.0911        | 0.0919        | 0.0919        | 0.0918        | 0.0956        |               |
|                           | 0.0868        | 0.0889        | 0.0892        |               |               | 0.0961        | 0.0906        | 0.0913        | 0.0910        | 0.0921        | 0.0917        | 0.0918        | 0.0912        |               |
| <b><math>M</math> [%]</b> | <b>0.0866</b> | <b>0.0893</b> | <b>0.0895</b> | <b>0.0905</b> | <b>0.0907</b> | <b>0.0907</b> | <b>0.0907</b> | <b>0.0910</b> | <b>0.0914</b> | <b>0.0916</b> | <b>0.0916</b> | <b>0.0927</b> | <b>0.0933</b> | <b>0.0911</b> |
| $s_M$ [%]                 | 0.0005        | 0.0011        | 0.0005        | 0.0007        | 0.0006        | 0.0028        | 0.0002        | 0.0006        | 0.0003        | 0.0003        | 0.0002        | 0.0009        | 0.0015        | 0.0011        |
| $s_i$ [%]                 |               |               |               |               |               |               |               |               |               |               |               |               |               | 0.0011        |
| $s_{rel}$                 | 0.00617       | 0.01219       | 0.00537       | 0.00814       | 0.00637       | 0.03089       | 0.00171       | 0.00671       | 0.00320       | 0.00341       | 0.00181       | 0.00986       | 0.01640       | 0.01241       |

25

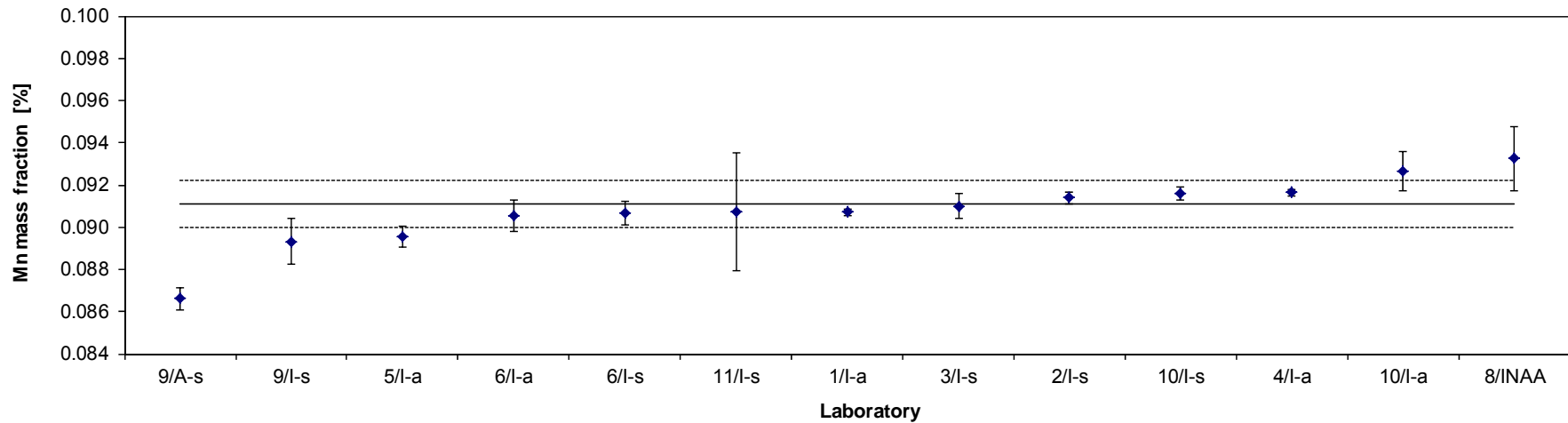


Table 27: Results for Mn

| Lab./Meth.                | 13/l-s        | 9/A(R)        | 6/l-s         | 6/l-a         | 3/l-s         | 4/l-a         | 10/l-s        | 9/l-s         | 1/l-a         | 2/l-s         | 10/l-a        | 5/l-a         | 8/XRF         |  | N             |
|---------------------------|---------------|---------------|---------------|---------------|---------------|---------------|---------------|---------------|---------------|---------------|---------------|---------------|---------------|--|---------------|
| $M_i$ [%]                 | 2.280         | 2.298         | 2.320         | 2.330         | 2.363         | 2.3814        | 2.399         | 2.403         | 2.411         | 2.419         | 2.420         | 2.455         | 2.515         |  | 13            |
|                           | 2.270         | 2.291         | 2.340         | 2.360         | 2.357         | 2.3847        | 2.384         | 2.404         | 2.413         | 2.419         | 2.448         | 2.452         | 2.505         |  |               |
|                           | 2.280         | 2.298         | 2.340         | 2.350         | 2.340         | 2.3799        | 2.428         | 2.401         | 2.403         | 2.363         | 2.429         | 2.431         | 2.527         |  |               |
|                           | 2.260         |               |               |               | 2.378         | 2.3822        | 2.414         | 2.406         | 2.423         | 2.413         | 2.432         | 2.437         | 2.515         |  |               |
|                           | 2.340         |               |               |               | 2.369         | 2.3797        | 2.419         | 2.419         | 2.408         | 2.458         | 2.418         | 2.456         |               |  |               |
|                           | 2.160         |               |               |               | 2.380         | 2.3822        | 2.414         | 2.437         | 2.415         | 2.434         | 2.423         | 2.447         |               |  |               |
| <b><math>M</math> [%]</b> | <b>2.2650</b> | <b>2.2957</b> | <b>2.3333</b> | <b>2.3467</b> | <b>2.3644</b> | <b>2.3817</b> | <b>2.4097</b> | <b>2.4117</b> | <b>2.4122</b> | <b>2.4177</b> | <b>2.4283</b> | <b>2.4463</b> | <b>2.5155</b> |  | <b>2.3868</b> |
| $s_M$ [%]                 | 0.0586        | 0.0040        | 0.0115        | 0.0153        | 0.0147        | 0.0019        | 0.0157        | 0.0140        | 0.0068        | 0.0313        | 0.0110        | 0.0105        | 0.0092        |  | 0.0663        |
| $s_i$ [%]                 |               |               |               |               |               |               |               |               |               |               |               |               |               |  | 0.0212        |
| $s_{rel}$                 | 0.02586       | 0.00176       | 0.00495       | 0.00651       | 0.00622       | 0.00078       | 0.00652       | 0.00579       | 0.00280       | 0.01296       | 0.00453       | 0.00430       | 0.00365       |  | 0.02777       |

26

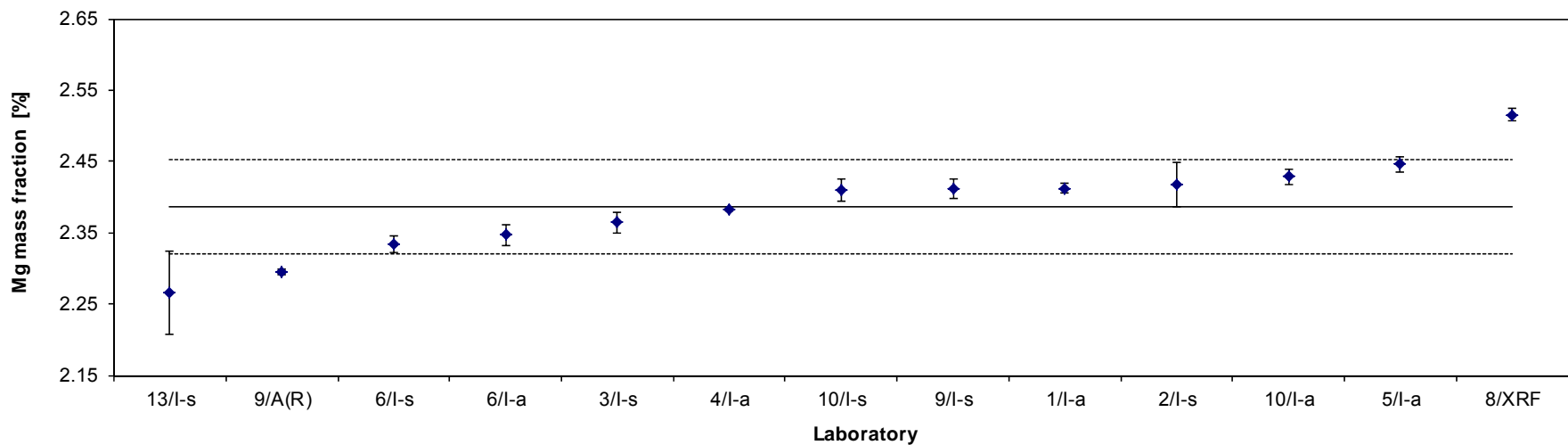


Table 28: Results for Mg

| Lab./Meth.                | 8/NAA         | 10/l-s        | 6/l-a         | 9/l-s         | 5/l-a         | 4/l-a         | 8/XRF         | 11/l          | 1/l-a         | 2/l-s         | 3/l-s         | 13/l-s        | 6/l-a         | 10/l-a        |  | N             |
|---------------------------|---------------|---------------|---------------|---------------|---------------|---------------|---------------|---------------|---------------|---------------|---------------|---------------|---------------|---------------|--|---------------|
| $M_i$ [%]                 | 0.1376        | 0.1397        | 0.1406        | 0.1419        | 0.1432        | 0.1405        | 0.141         | 0.1399        | 0.1412        | 0.1420        | 0.1421        | 0.142         | 0.1440        | 0.1452        |  | 14            |
|                           | 0.1374        | 0.1380        | 0.1411        | 0.1412        | 0.1415        | 0.1403        | 0.144         | 0.1417        | 0.1425        | 0.1415        | 0.1418        | 0.143         | 0.1440        | 0.1460        |  |               |
|                           | 0.1372        | 0.1405        | 0.1401        | 0.1406        | 0.1400        | 0.1405        | 0.134         | 0.1393        | 0.1417        | 0.1418        | 0.1411        | 0.143         | 0.1440        | 0.1438        |  |               |
|                           | 0.1407        | 0.1397        |               | 0.1407        | 0.1386        | 0.1417        | 0.147         | 0.1397        | 0.1410        | 0.1425        | 0.1437        | 0.142         |               | 0.1433        |  |               |
|                           | 0.1375        | 0.1403        |               | 0.1391        | 0.1426        | 0.1414        |               | 0.1398        | 0.1411        | 0.1406        | 0.1430        | 0.144         |               | 0.1432        |  |               |
|                           | 0.1378        | 0.1400        |               | 0.1404        | 0.1392        | 0.1414        |               | 0.1474        | 0.1405        | 0.1411        | 0.1429        | 0.146         |               | 0.1433        |  |               |
| <b><math>M</math> [%]</b> | <b>0.1380</b> | <b>0.1397</b> | <b>0.1406</b> | <b>0.1407</b> | <b>0.1408</b> | <b>0.1410</b> | <b>0.1413</b> | <b>0.1413</b> | <b>0.1413</b> | <b>0.1416</b> | <b>0.1424</b> | <b>0.1433</b> | <b>0.1440</b> | <b>0.1441</b> |  | <b>0.1414</b> |
| $s_M$ [%]                 | 0.0013        | 0.0009        | 0.0005        | 0.0009        | 0.0019        | 0.0006        | 0.0057        | 0.0031        | 0.0007        | 0.0007        | 0.0010        | 0.0015        | 0.0000        | 0.0012        |  | 0.0016        |
| $\bar{s}_i$ [%]           |               |               |               |               |               |               |               |               |               |               |               |               |               |               |  | 0.0020        |
| $s_{rel}$                 | 0.00957       | 0.00639       | 0.00356       | 0.00662       | 0.01344       | 0.00426       | 0.04051       | 0.02196       | 0.00487       | 0.00476       | 0.00673       | 0.01050       | 0.00000       | 0.00821       |  | 0.01160       |

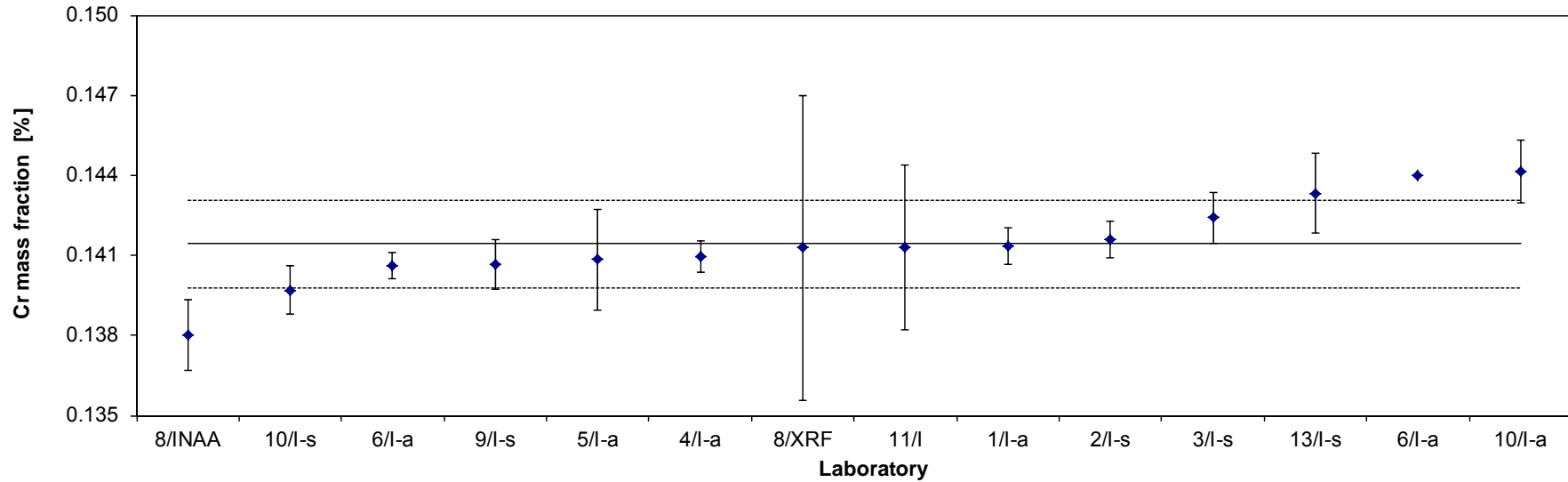


Table 29: Results for Cr

| Lab./Meth.                | 9/l-s         | 9/A-s         | 4/l-s         | 6/l-a         | 11/l-s        | 10/l-s        | 13/l-s        | 6/l-s         | 1/l-a         | 2/l-s         | 10/l-a        | 3/l-s         | 2/P           | 5/l-a         | 8/XRF         |  | N             |
|---------------------------|---------------|---------------|---------------|---------------|---------------|---------------|---------------|---------------|---------------|---------------|---------------|---------------|---------------|---------------|---------------|--|---------------|
| $M_i$ [%]                 | 0.0334        | 0.0333        | 0.0351        | 0.0360        | 0.0352        | 0.0358        | 0.0360        | 0.0359        | 0.0360        | 0.0364        | 0.0364        | 0.0364        | 0.0357        | 0.0368        | 0.0391        |  | 15            |
|                           | 0.0326        | 0.0339        | 0.0351        | 0.0350        | 0.0354        | 0.0357        | 0.0360        | 0.0360        | 0.0366        | 0.0385        | 0.0370        | 0.0364        | 0.0357        | 0.0375        | 0.0382        |  |               |
|                           | 0.0333        | 0.0341        | 0.0350        | 0.0360        | 0.0343        | 0.0360        | 0.0360        | 0.0362        | 0.0363        | 0.0356        | 0.0363        | 0.0363        | 0.0381        | 0.0372        | 0.0396        |  |               |
|                           | 0.0329        | 0.0336        | 0.0350        |               | 0.0374        | 0.0359        | 0.0360        |               | 0.0363        | 0.0358        | 0.0364        | 0.0365        | 0.0367        | 0.0371        | 0.0393        |  |               |
|                           | 0.0325        | 0.0340        | 0.0351        |               | 0.0358        | 0.0360        | 0.0360        |               | 0.0359        | 0.0355        | 0.0363        | 0.0365        | 0.0366        | 0.0367        |               |  |               |
|                           | 0.0326        | 0.0328        | 0.0352        |               | 0.0369        | 0.0361        | 0.0360        |               | 0.0363        | 0.0367        | 0.0362        | 0.0369        |               | 0.0364        |               |  |               |
| <b><math>M</math> [%]</b> | <b>0.0329</b> | <b>0.0336</b> | <b>0.0351</b> | <b>0.0357</b> | <b>0.0358</b> | <b>0.0359</b> | <b>0.0360</b> | <b>0.0360</b> | <b>0.0362</b> | <b>0.0364</b> | <b>0.0364</b> | <b>0.0365</b> | <b>0.0366</b> | <b>0.0369</b> | <b>0.0391</b> |  | <b>0.0359</b> |
| $S_M$ [%]                 | 0.0004        | 0.0005        | 0.0001        | 0.0006        | 0.0011        | 0.0001        | 0.0000        | 0.0002        | 0.0003        | 0.0011        | 0.0003        | 0.0002        | 0.0010        | 0.0004        | 0.0006        |  | 0.0014        |
| $S_i$ [%]                 |               |               |               |               |               |               |               |               |               |               |               |               |               |               |               |  | 0.0006        |
| $S_{rel}$                 | 0.01168       | 0.01474       | 0.00189       | 0.01619       | 0.03190       | 0.00410       | 0.00000       | 0.00424       | 0.00691       | 0.03084       | 0.00789       | 0.00571       | 0.02691       | 0.01085       | 0.01610       |  | 0.03901       |

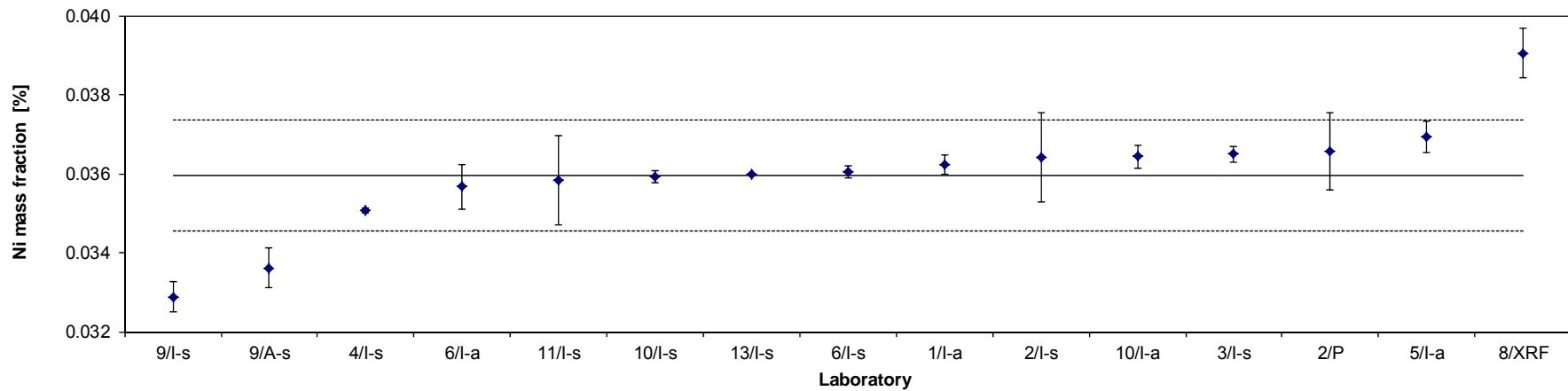


Table 30: Results for Ni

| Lab./Meth.                | 8/INAA        | 9/A-s         | 13/l-s        | 2/l-s         | 5/l-a         | 10/l-a        | 1/l-a         | 10/l-s        | 4/l-a         | 6/l-s         | 3/l-s         | 6/l-a         | 8/XRF         |  | N             |
|---------------------------|---------------|---------------|---------------|---------------|---------------|---------------|---------------|---------------|---------------|---------------|---------------|---------------|---------------|--|---------------|
| $M_i$ [%]                 | 6.7420        | 6.7700        | 6.8190        | 6.890         | 6.897         | 6.9120        | 6.910         | 6.9930        | 6.9682        | 6.910         | 6.985         | 7.060         | 7.189         |  | 13            |
|                           | 6.7490        | 6.7890        | 6.7830        | 6.834         | 6.943         | 6.8870        | 6.925         | 6.9730        | 6.9381        | 6.940         | 6.973         | 7.100         | 7.127         |  |               |
|                           | 6.7290        | 6.6910        | 6.8110        | 6.645         | 6.879         | 7.0720        | 6.930         | 6.9450        | 6.9503        | 7.010         | 6.908         | 7.060         | 7.283         |  |               |
|                           | 6.8590        | 6.7930        | 6.9270        | 6.880         | 6.884         | 6.8360        | 6.960         | 6.9460        | 6.9338        |               | 7.041         |               | 7.282         |  |               |
|                           | 6.6720        | 6.6990        | 6.8280        | 6.964         | 6.895         | 6.8580        | 6.945         | 6.8933        | 6.9541        |               | 7.007         |               |               |  |               |
|                           | 6.6970        | 6.8000        | 6.8360        | 6.860         | 6.884         | 6.9640        | 6.960         | 6.9233        | 6.9653        |               | 7.026         |               |               |  |               |
| <b><math>M</math> [%]</b> | <b>6.7413</b> | <b>6.7570</b> | <b>6.8340</b> | <b>6.8455</b> | <b>6.8969</b> | <b>6.9215</b> | <b>6.9383</b> | <b>6.9456</b> | <b>6.9516</b> | <b>6.9533</b> | <b>6.9899</b> | <b>7.0733</b> | <b>7.2203</b> |  | <b>6.9284</b> |
| $s_M$ [%]                 | 0.0645        | 0.0491        | 0.0491        | 0.1075        | 0.0236        | 0.0861        | 0.0202        | 0.0353        | 0.0139        | 0.0513        | 0.0473        | 0.0231        | 0.0762        |  | 0.1267        |
| $s_i$ [%]                 |               |               |               |               |               |               |               |               |               |               |               |               |               |  | 0.0565        |
| $s_{rel}$                 | 0.00957       | 0.00727       | 0.00718       | 0.01570       | 0.00342       | 0.01244       | 0.00291       | 0.00508       | 0.00200       | 0.00738       | 0.00677       | 0.00326       | 0.01055       |  | 0.01829       |

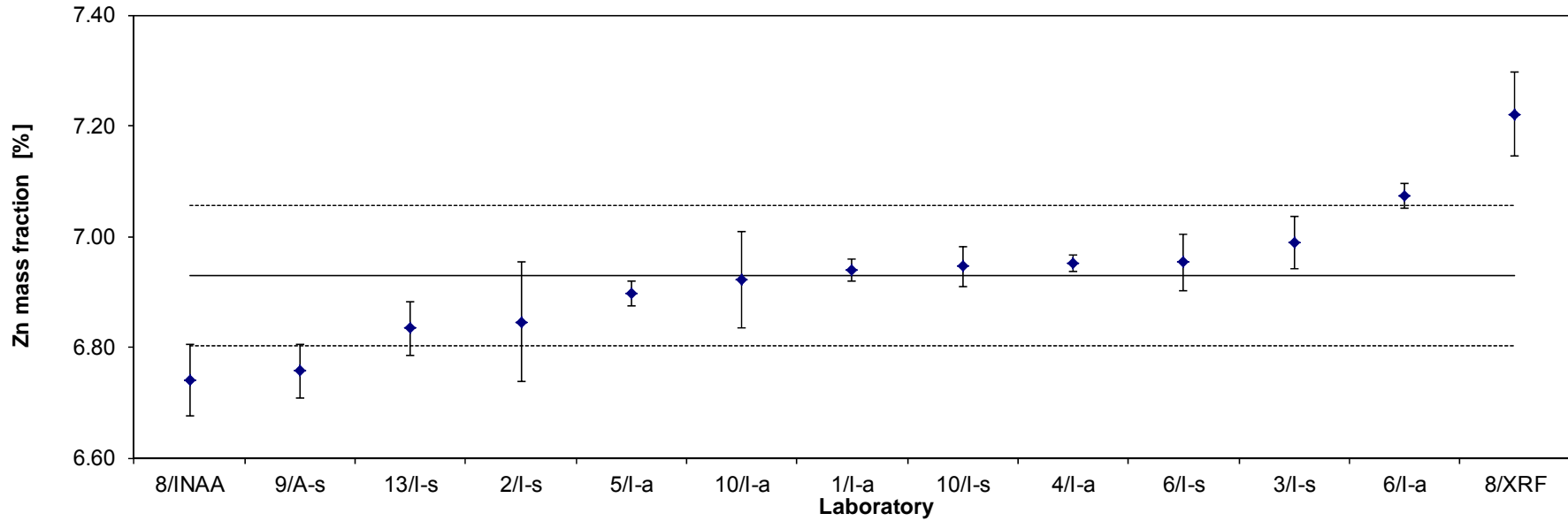


Table 31: Results for Zn

| Lab./Meth.                | 6/l-a         | 6/l-s         | 2/l-s         | 2/P           | 13/l-s        | 11/l-s        | 3/l-s         | 10/l-s        | 5/l-a         | 10/l-a        | 8/XRF         | 4/l-a         | 1/l-a(R)      | 9/l(R)        |  | N             |
|---------------------------|---------------|---------------|---------------|---------------|---------------|---------------|---------------|---------------|---------------|---------------|---------------|---------------|---------------|---------------|--|---------------|
| $M_i$ [%]                 | 0.0890        | 0.0903        | 0.0916        | 0.091         | 0.094         | 0.0942        | 0.0939        | 0.0947        | 0.0963        | 0.0969        | 0.0971        | 0.0984        | 0.1008        | 0.1012        |  | 14            |
|                           | 0.0890        | 0.0906        | 0.0912        | 0.090         | 0.093         | 0.0951        | 0.0946        | 0.0959        | 0.0960        | 0.0977        | 0.0985        | 0.0985        | 0.1005        | 0.1029        |  |               |
|                           | 0.0890        | 0.0908        | 0.0900        | 0.095         | 0.092         | 0.0909        | 0.0940        | 0.0960        | 0.0951        | 0.0959        | 0.0938        | 0.0989        | 0.1012        | 0.1031        |  |               |
|                           |               |               | 0.0916        | 0.095         | 0.094         | 0.0921        | 0.0949        | 0.0954        | 0.0947        | 0.0957        | 0.0970        | 0.0984        | 0.1024        |               |  |               |
|                           |               |               | 0.0903        | 0.095         | 0.095         | 0.0942        | 0.0945        | 0.0949        | 0.0952        | 0.0953        |               | 0.0982        | 0.1031        |               |  |               |
|                           |               | 0.0905        | 0.092         | 0.095         | 0.0983        | 0.0955        | 0.0946        | 0.0966        | 0.0961        |               | 0.0987        | 0.1029        |               |               |  |               |
| <b><math>M</math> [%]</b> | <b>0.0890</b> | <b>0.0906</b> | <b>0.0909</b> | <b>0.0930</b> | <b>0.0938</b> | <b>0.0941</b> | <b>0.0946</b> | <b>0.0953</b> | <b>0.0957</b> | <b>0.0963</b> | <b>0.0966</b> | <b>0.0985</b> | <b>0.1018</b> | <b>0.1024</b> |  | <b>0.0952</b> |
| $s_M$ [%]                 | 0.0000        | 0.0003        | 0.0007        | 0.0022        | 0.0012        | 0.0026        | 0.0006        | 0.0006        | 0.0008        | 0.0009        | 0.0020        | 0.0003        | 0.0011        | 0.0010        |  | 0.0039        |
| $s_i$ [%]                 |               |               |               |               |               |               |               |               |               |               |               |               |               |               |  | 0.0013        |
| $s_{rel}$                 | 0.00000       | 0.00278       | 0.00761       | 0.02405       | 0.01246       | 0.02725       | 0.00625       | 0.00639       | 0.00812       | 0.00914       | 0.02076       | 0.00263       | 0.01103       | 0.01020       |  | 0.04090       |

30

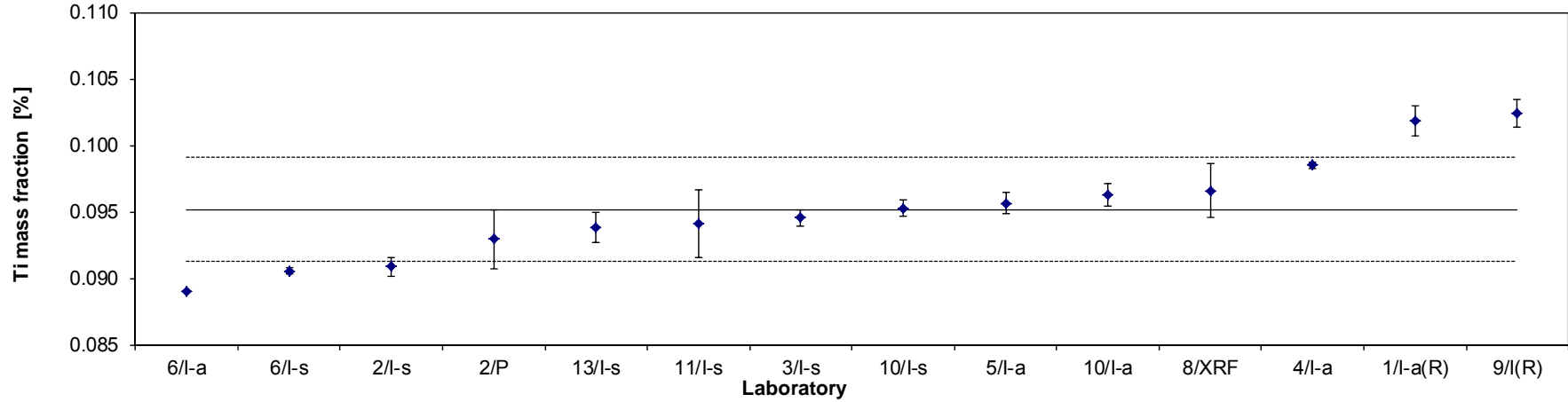


Table 32: Results for Ti

| Lab./Meth.                | 9/l           | 3/l-s(R)      | 2/l-s         | 5/l-a         | 1/l-a         | 4/l-s         | 6/l-s         | 6/l-a         | 10/l-s        | 13/l-s        | 8/XRF         |  | N             |
|---------------------------|---------------|---------------|---------------|---------------|---------------|---------------|---------------|---------------|---------------|---------------|---------------|--|---------------|
| $M_i$ [%]                 | 0.1185        | 0.1189        | 0.1256        | 0.1277        | 0.1299        | 0.1314        | 0.1312        | 0.1320        | 0.1339        | 0.1360        | 0.143         |  | 11            |
|                           | 0.1194        | 0.1276        | 0.1256        | 0.1286        | 0.1301        | 0.1311        | 0.1311        | 0.1330        | 0.1341        | 0.1360        | 0.142         |  |               |
|                           | 0.1184        | 0.1210        | 0.1259        | 0.1284        | 0.1303        | 0.1307        | 0.1311        | 0.1310        | 0.1345        | 0.1360        | 0.145         |  |               |
|                           | 0.1179        | 0.1252        | 0.1279        | 0.1275        | 0.1303        | 0.1303        |               |               | 0.1338        | 0.1350        | 0.145         |  |               |
|                           | 0.1180        | 0.1272        | 0.1258        | 0.1286        | 0.1305        | 0.1303        |               |               | 0.1346        | 0.1360        |               |  |               |
|                           | 0.1184        | 0.1288        | 0.1244        | 0.1276        | 0.1304        | 0.1301        |               |               | 0.1341        | 0.1370        |               |  |               |
| <b><math>M</math> [%]</b> | <b>0.1184</b> | <b>0.1248</b> | <b>0.1259</b> | <b>0.1281</b> | <b>0.1303</b> | <b>0.1306</b> | <b>0.1311</b> | <b>0.1320</b> | <b>0.1342</b> | <b>0.1360</b> | <b>0.1438</b> |  | <b>0.1305</b> |
| $s_M$ [%]                 | 0.0005        | 0.0040        | 0.0011        | 0.0005        | 0.0002        | 0.0005        | 0.0001        | 0.0010        | 0.0003        | 0.0006        | 0.0014        |  | 0.0065        |
| $s_i$ [%]                 |               |               |               |               |               |               |               |               |               |               |               |  | 0.0014        |
| $s_{rel}$                 | 0.00449       | 0.03192       | 0.00901       | 0.00410       | 0.00166       | 0.00385       | 0.00044       | 0.00758       | 0.00239       | 0.00465       | 0.00985       |  | 0.05013       |

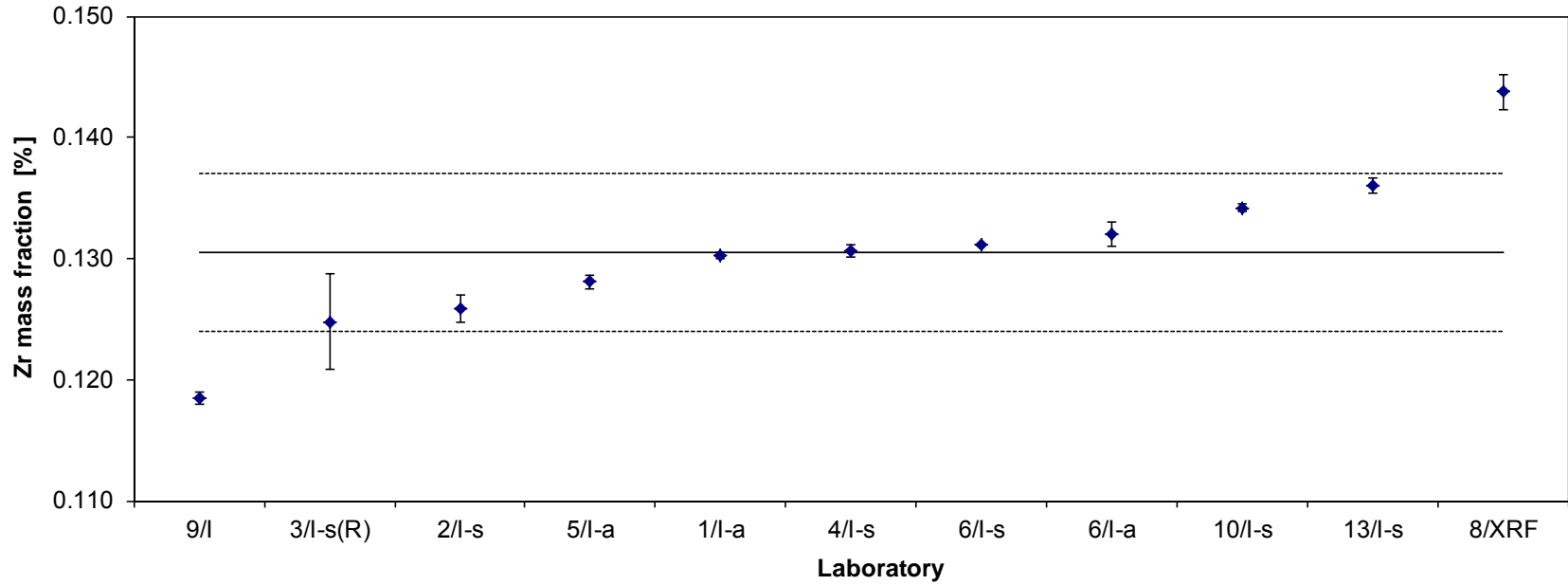


Table 33: Results for Zr

| Lab./Meth.       | 8/INAA       | 10/l-s       | 4/IMS-s      | 10/IMS       | 6/l-a        | 11/l         | 3/-s         | 6/l-s        | 2/l-s        | 5/l-a(R)     | 1/l-a        |  | N            |
|------------------|--------------|--------------|--------------|--------------|--------------|--------------|--------------|--------------|--------------|--------------|--------------|--|--------------|
| $M_i$ [mg/kg]    | 63.8         | 67.4         | 66.7         | 68.4         | 67.0         | 68.0         | 72.2         | 73.0         | 79.1         | 84.3         | 85.6         |  | 11           |
|                  | 64.6         | 67.2         | 67.0         | 66.9         | 68.0         | 68.0         | 72.1         | 75.0         | 79.2         | 83.7         | 88.8         |  |              |
|                  | 64.1         | 66.2         | 67.1         | 68.0         | 68.0         | 68.0         | 72.3         | 74.0         | 78.9         | 84.4         | 89.0         |  |              |
|                  | 65.5         | 65.6         | 66.5         | 65.4         |              | 69.0         | 72.7         |              | 79.3         | 85.3         | 91.0         |  |              |
|                  | 63.4         | 66.6         | 66.5         | 67.2         |              | 69.0         | 72.8         |              | 78.2         | 83.6         | 85.4         |  |              |
|                  | 63.8         | 66.3         | 66.4         | 68.5         |              | 68.0         | 72.6         |              | 78.2         | 85.6         | 83.6         |  |              |
| <b>M [mg/kg]</b> | <b>64.20</b> | <b>66.57</b> | <b>66.70</b> | <b>67.40</b> | <b>67.67</b> | <b>68.33</b> | <b>72.46</b> | <b>74.00</b> | <b>78.82</b> | <b>84.48</b> | <b>87.23</b> |  | <b>72.53</b> |
| $s_M$ [mg/kg]    | 0.751        | 0.660        | 0.288        | 1.159        | 0.577        | 0.516        | 0.271        | 1.000        | 0.496        | 0.818        | 2.793        |  | 7.792        |
| $s_i$ [mg/kg]    |              |              |              |              |              |              |              |              |              |              |              |  | 1.0792       |
| $s_{rel}$        | 0.012        | 0.010        | 0.004        | 0.017        | 0.009        | 0.008        | 0.004        | 0.014        | 0.006        | 0.010        | 0.032        |  | 0.107        |

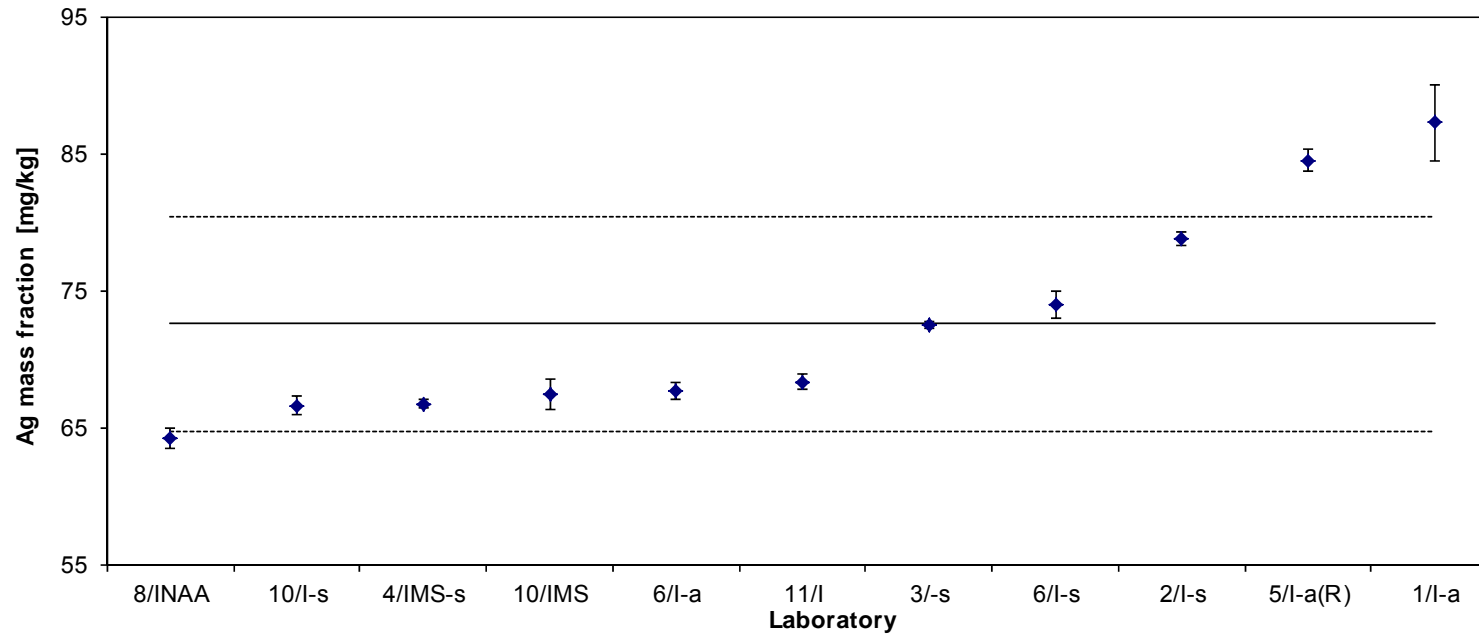


Table 34: Results for Ag



| Lab./Meth.       | 10/l-s      | 10/l-a      | 10/IMS      | 11/l        | 4/l-s       | 6/l-a        | 1/l-a        | 3/l-s        | 13/l-s       | 5/l-a        |  | N            |
|------------------|-------------|-------------|-------------|-------------|-------------|--------------|--------------|--------------|--------------|--------------|--|--------------|
| $M_i$ [mg/kg]    | 9.3         | 9.4         | 9.7         | 9.7         | 9.8         | 10.00        | 10.3         | 10.4         | 11.0         | 11.0         |  | 10           |
|                  | 9.3         | 10.0        | 9.7         | 9.8         | 9.9         | 10.05        | 10.4         | 10.5         | 11.0         | 11.3         |  |              |
|                  | 9.4         | 9.4         | 9.6         | 9.7         | 9.8         | 10.10        | 10.3         | 10.5         | 11.0         | 11.0         |  |              |
|                  | 9.3         | 9.6         | 9.5         | 9.7         | 9.8         |              | 10.4         | 10.6         | 11.0         | 11.1         |  |              |
|                  | 9.5         | 9.3         | 9.3         | 9.1         | 9.7         |              | 10.4         | 10.6         | 11.0         | 11.1         |  |              |
|                  | 9.4         | 9.4         | 9.5         | 9.4         | 9.7         |              | 10.4         | 10.6         | 11.0         | 11.1         |  |              |
| <b>M [mg/kg]</b> | <b>9.37</b> | <b>9.52</b> | <b>9.56</b> | <b>9.57</b> | <b>9.79</b> | <b>10.05</b> | <b>10.36</b> | <b>10.54</b> | <b>11.00</b> | <b>11.10</b> |  | <b>10.08</b> |
| $s_M$ [mg/kg]    | 0.064       | 0.256       | 0.144       | 0.266       | 0.054       | 0.050        | 0.063        | 0.072        | 0.000        | 0.110        |  | 0.635        |
| $s_i$ [mg/kg]    |             |             |             |             |             |              |              |              |              |              |  | 0.1369       |
| $s_{rel}$        | 0.007       | 0.027       | 0.015       | 0.028       | 0.005       | 0.005        | 0.006        | 0.007        | 0.000        | 0.010        |  | 0.063        |

33

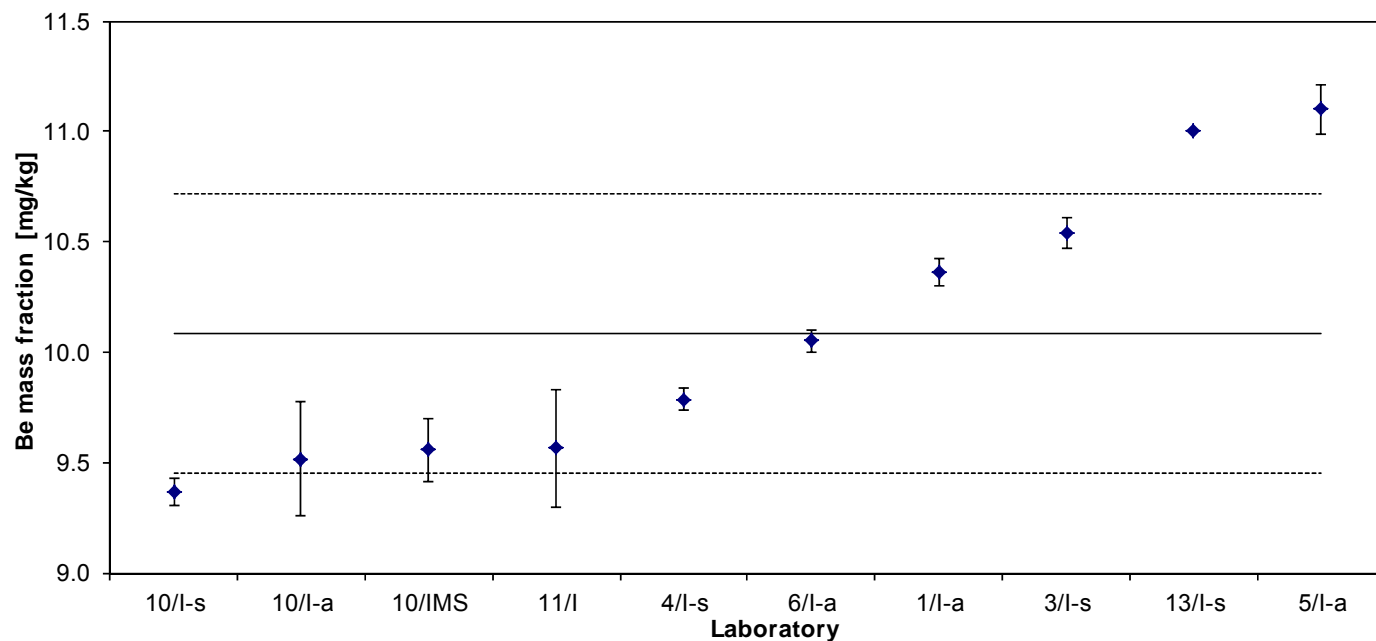


Table 35: Results for Be

| Lab./Meth.                    | 10/IMS       | 13/l-s       | 12/l-s       | 4/IMS-s      | 6/l-a        | 5/l-a        | 11/l         | 1/l-s        |  | N            |
|-------------------------------|--------------|--------------|--------------|--------------|--------------|--------------|--------------|--------------|--|--------------|
| $M_i$ [mg/kg]                 | 38.1         | 39.0         | 41.7         | 40.3         | 41.8         | 40.5         | 41           | 42.4         |  | 8            |
|                               | 37.9         | 39.0         | 38.0         | 40.6         | 40.8         | 41.8         | 41           | 48.3         |  |              |
|                               | 38.0         | 39.0         | 38.3         | 40.4         | 41.6         | 38.4         | 46           | 43.5         |  |              |
|                               | 37.8         | 38.0         |              | 40.2         |              | 43.0         | 44           | 47.4         |  |              |
|                               | 37.3         | 39.0         |              | 39.7         |              | 44.9         | 42           | 36.5         |  |              |
|                               | 37.6         | 39.0         |              | 39.7         |              | 40.3         | 43           | 40.3         |  |              |
| <b><math>M</math> [mg/kg]</b> | <b>37.79</b> | <b>38.83</b> | <b>39.33</b> | <b>40.14</b> | <b>41.40</b> | <b>41.48</b> | <b>42.83</b> | <b>43.07</b> |  | <b>40.61</b> |
| $s_M$ [mg/kg]                 | 0.281        | 0.408        | 2.055        | 0.351        | 0.529        | 2.278        | 1.941        | 4.418        |  | 1.903        |
| $s_i$ [mg/kg]                 |              |              |              |              |              |              |              |              |  | 2.0415       |
| $s_{rel}$                     | 0.007        | 0.011        | 0.052        | 0.009        | 0.013        | 0.055        | 0.045        | 0.103        |  | 0.047        |

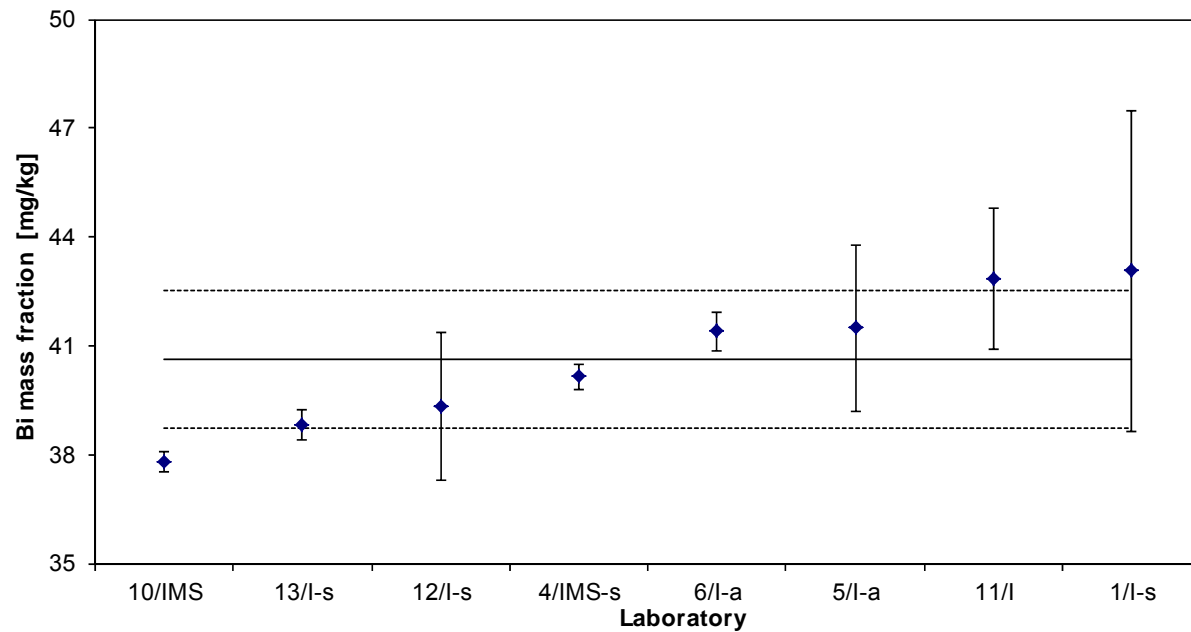


Table 36: Results for Bi

| Lab./Meth.                    | 8/INAA        | 1/l-a         | 4/l-s         | 6/l-a         | 6/l-s         | 13/l-s        | 3/l-s         | 10/IMS        | 11/l          | 8/XRF         | 10/l-s        | 5/l-a(R)      | 2/l-s         |  | N             |
|-------------------------------|---------------|---------------|---------------|---------------|---------------|---------------|---------------|---------------|---------------|---------------|---------------|---------------|---------------|--|---------------|
| $M_i$ [mg/kg]                 | 155.6         | 161.3         | 168.0         | 170.0         | 171.0         | 180.0         | 186.9         | 190.0         | 183.0         | 188.0         | 191.5         | 210.1         | 209.8         |  | 13            |
|                               | 159.2         | 161.7         | 168.4         | 172.0         | 171.0         | 180.0         | 184.9         | 188.7         | 185.0         | 187.0         | 193.4         | 207.6         | 210.5         |  |               |
|                               | 160.6         | 162.5         | 168.2         | 172.0         | 172.0         | 180.0         | 184.6         | 188.7         | 184.0         | 191.0         | 192.3         | 210.4         | 209.1         |  |               |
|                               | 160.5         | 162.7         | 168.3         |               |               | 180.0         | 185.9         | 185.3         | 187.0         | 195.0         | 191.5         | 210.2         | 210.4         |  |               |
|                               | 158.1         | 164.3         | 169.3         |               |               | 180.0         | 184.7         | 182.7         | 188.0         |               | 193.0         | 208.2         | 208.5         |  |               |
|                               | 158.9         | 163.8         | 169.5         |               |               | 180.0         | 187.3         | 185.6         | 196.0         |               | 192.9         | 208.7         | 208.9         |  |               |
| <b><math>M</math> [mg/kg]</b> | <b>158.82</b> | <b>162.72</b> | <b>168.62</b> | <b>171.33</b> | <b>171.33</b> | <b>180.00</b> | <b>185.71</b> | <b>186.83</b> | <b>187.17</b> | <b>190.25</b> | <b>192.43</b> | <b>209.20</b> | <b>209.53</b> |  | <b>182.61</b> |
| $s_M$ [mg/kg]                 | 1.845         | 1.163         | 0.626         | 1.155         | 0.577         | 0.000         | 1.177         | 2.755         | 4.708         | 3.594         | 0.804         | 1.188         | 0.826         |  | 15.952        |
| $s_i$ [mg/kg]                 |               |               |               |               |               |               |               |               |               |               |               |               |               |  | 2.0309        |
| $s_{rel}$                     | 0.012         | 0.007         | 0.004         | 0.007         | 0.003         | 0.000         | 0.006         | 0.015         | 0.025         | 0.019         | 0.004         | 0.006         | 0.004         |  | 0.087         |

35

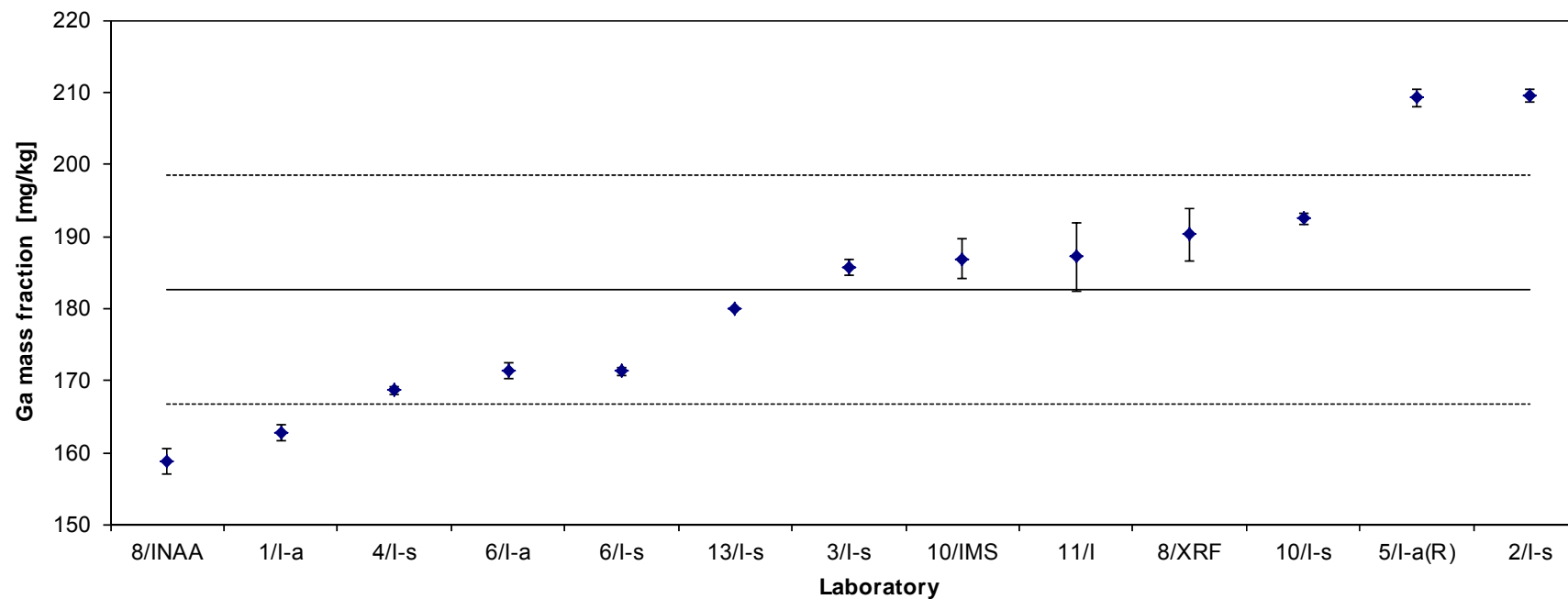


Table 37: Results for Ga

| Lab./Meth.                    | 8/INAA-1      | 8/INAA-1      | 11/l          | 10/IMS        | 3/l-s         | 6/l-a         | 12/l-s        | 5/l-a         | 4/l-s(R)      | 13/l-s        | 9/l-s         | 8/XRF         |  | N             |
|-------------------------------|---------------|---------------|---------------|---------------|---------------|---------------|---------------|---------------|---------------|---------------|---------------|---------------|--|---------------|
| $M_i$ [mg/kg]                 | 151.4         | 149.1         | 158.0         | 159.3         | 158.47        | 159.0         | 161.2         | 159.7         | 163.3         | 170.0         | 160.0         | [195]         |  | 12            |
|                               | 148.1         | 152.6         | 158.0         | 159.8         | 162.60        | 162.0         | 159.8         | 162.8         | 162.4         | 170.0         | 174.0         | 179           |  |               |
|                               | 156.4         | 154.0         | 152.0         | 159.9         | 160.70        | 159.0         | 159.1         | 161.0         | 163.0         | 170.0         | 175.0         | 174           |  |               |
|                               | 149.1         | 153.5         | 156.0         | 158.9         | 159.29        |               |               | 159.0         | 161.0         | 170.0         | 170.0         | 176           |  |               |
|                               | 156.4         | 153.5         | 155.0         | 155.5         | 158.95        |               |               | 162.0         |               | 170.0         | 177.0         |               |  |               |
|                               | 151.4         | 153.4         | 161.0         | 158.1         | 158.23        |               |               | 157.8         |               | 170.0         | 176.0         |               |  |               |
| <b><math>M</math> [mg/kg]</b> | <b>152.13</b> | <b>152.68</b> | <b>156.67</b> | <b>158.58</b> | <b>159.71</b> | <b>160.00</b> | <b>160.05</b> | <b>160.38</b> | <b>162.43</b> | <b>170.00</b> | <b>172.00</b> | <b>176.33</b> |  | <b>161.75</b> |
| $s_M$ [mg/kg]                 | 3.548         | 1.813         | 3.077         | 1.647         | 1.662         | 1.732         | 1.072         | 1.891         | 1.021         | 0.000         | 6.356         | 2.517         |  | 7.440         |
| $s_i$ [mg/kg]                 |               |               |               |               |               |               |               |               |               |               |               |               |  | 2.6821        |
| $s_{rel}$                     | 0.023         | 0.012         | 0.020         | 0.010         | 0.010         | 0.011         | 0.007         | 0.012         | 0.006         | 0.000         | 0.037         | 0.014         |  | 0.046         |

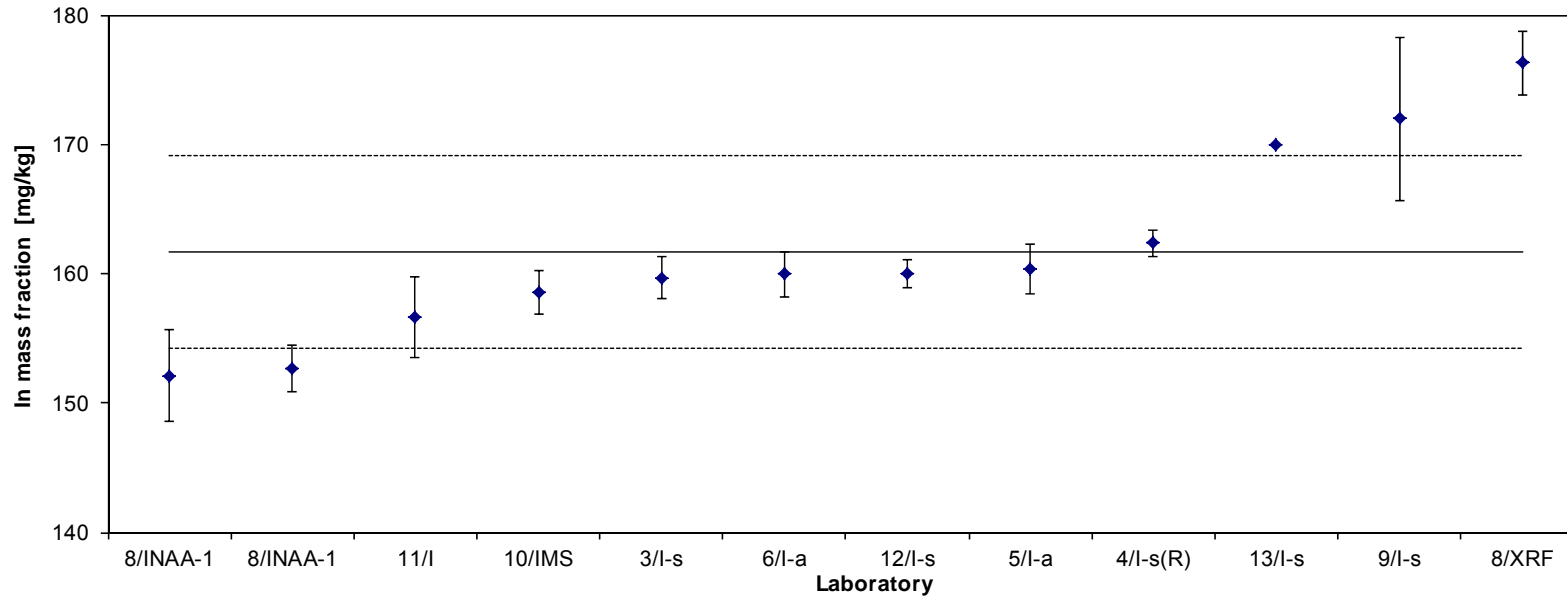


Table 38: Results for In

| Lab./Meth.                    | 3/l-s        | 13/l-s       | 6/l-a        | 10/IMS       | 6/l-s        | 11/l-s       | 4/IMS-s      | 1/l-a        | 2/l-s(R)     | 5/l-a        |  | N            |
|-------------------------------|--------------|--------------|--------------|--------------|--------------|--------------|--------------|--------------|--------------|--------------|--|--------------|
| $M_i$ [mg/kg]                 | 46.4         | 45.0         | 45.0         | 46.1         | 47.0         | 44.0         | 48.7         | 50.2         | 47.9         | 56.9         |  | 10           |
|                               | 46.3         | 45.0         | 45.0         | 46.5         | 46.0         | 46.0         | 48.6         | 50.6         | 51.9         | 52.4         |  |              |
|                               | 44.1         | 45.0         | 47.0         | 45.9         | 46.0         | 45.0         | 48.3         | 47.8         | 53.2         | 53.7         |  |              |
|                               | 44.4         | 45.0         |              | 46.0         |              | 52.0         | 48.6         | 51.0         | 51.1         | 55.2         |  |              |
|                               | 46.7         | 46.0         |              | 45.4         |              | 46.0         | 48.3         | 50.7         | 49.7         | 50.1         |  |              |
|                               | 45.8         | 47.0         |              | 45.6         |              | 47.0         | 48.3         | 49.3         |              | 54.6         |  |              |
|                               |              |              |              |              |              |              |              |              |              |              |  |              |
| <b><math>M</math> [mg/kg]</b> | <b>45.62</b> | <b>45.50</b> | <b>45.67</b> | <b>45.92</b> | <b>46.33</b> | <b>46.67</b> | <b>48.47</b> | <b>49.93</b> | <b>50.76</b> | <b>53.82</b> |  | <b>47.87</b> |
| $s_M$ [mg/kg]                 | 1.106        | 0.837        | 1.155        | 0.382        | 0.577        | 2.805        | 0.182        | 1.199        | 2.042        | 2.361        |  | 2.818        |
| $s_i$ [mg/kg]                 |              |              |              |              |              |              |              |              |              |              |  | 1.5105       |
| $s_{rel}$                     | 0.024        | 0.018        | 0.025        | 0.008        | 0.012        | 0.060        | 0.004        | 0.024        | 0.040        | 0.044        |  | 0.059        |

37

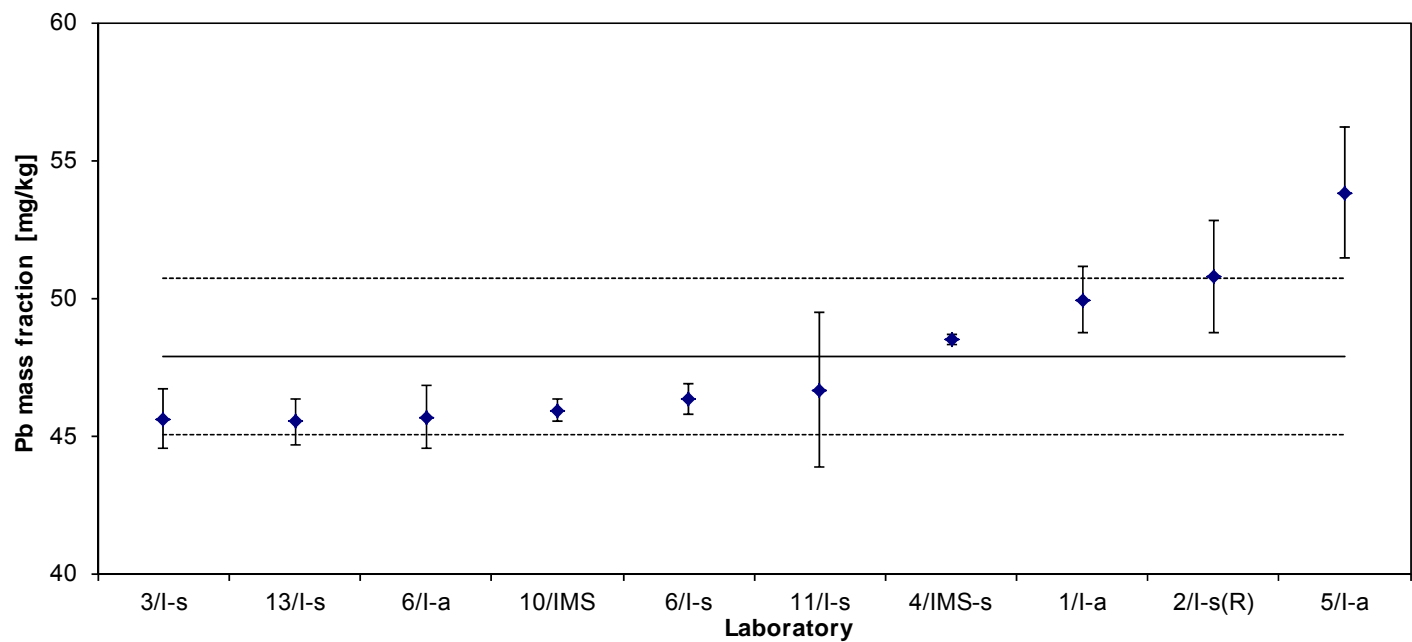


Table 39: Results for Pb

| Lab./Meth.                    | 13/l-s   | 1/l-a  | 4/IMS-s  | 6/l-a                   | 10/IMS   | 2/l-s  | 10/l-s   | 5/l-a(R)   | 10/l-a   | 3/l-s(R)   | 8/XRF                    |  | N             |
|-------------------------------|--|--|--|-------------------------|--|--|--|--|--|--|--------------------------|--|---------------|
| $M_i$ [mg/kg]                 | 220.0<br>230.0<br>220.0<br>220.0<br>230.0<br>230.0 | 229.5<br>231.4<br>230.5<br>224.3<br>227.8<br>226.9 | 234.2<br>231.4<br>232.2<br>233.5<br>232.6<br>234.2 | 232.0<br>234.0<br>234.0 | 238.1<br>236.0<br>233.2<br>230.9<br>238.0<br>230.5 | 235.7<br>234.4<br>238.4<br>238.0<br>235.4<br>235.7 | 239.9<br>242.6<br>240.7<br>238.0<br>242.5<br>242.2 | 240.4<br>240.6<br>243.1<br>244.4<br>240.0<br>241.4 | 241.0<br>243.0<br>244.0<br>249.0<br>243.0<br>241.0 | 235.9<br>257.7<br>243.1<br>250.4<br>257.5<br>259.4 | 270<br>266<br>269<br>272 |  | 10            |
| <b><math>M</math> [mg/kg]</b> | <b>225.00</b>                                      | <b>228.40</b>                                      | <b>233.00</b>                                      | <b>233.33</b>           | <b>234.45</b>                                      | <b>236.27</b>                                      | <b>240.98</b>                                      | <b>241.65</b>                                      | <b>243.50</b>                                      | <b>250.67</b>                                      | <b>269.25</b>            |  | <b>236.73</b> |
| $s_M$ [mg/kg]                 | 5.477  | 2.609  | 1.134  | 1.155                   | 3.409  | 1.577  | 1.819  | 1.739  | 2.950  | 9.461  | 2.500                    |  | 7.604         |
| $s_i$ [mg/kg]                 |  |  |  |                         |  |  |  |  |  |  |                          |  | 3.8651        |
| $s_{rel}$                     | 0.024  | 0.011  | 0.005  | 0.005                   | 0.015  | 0.007  | 0.008  | 0.007  | 0.012  | 0.038  | 0.009                    |  | 0.032         |

88

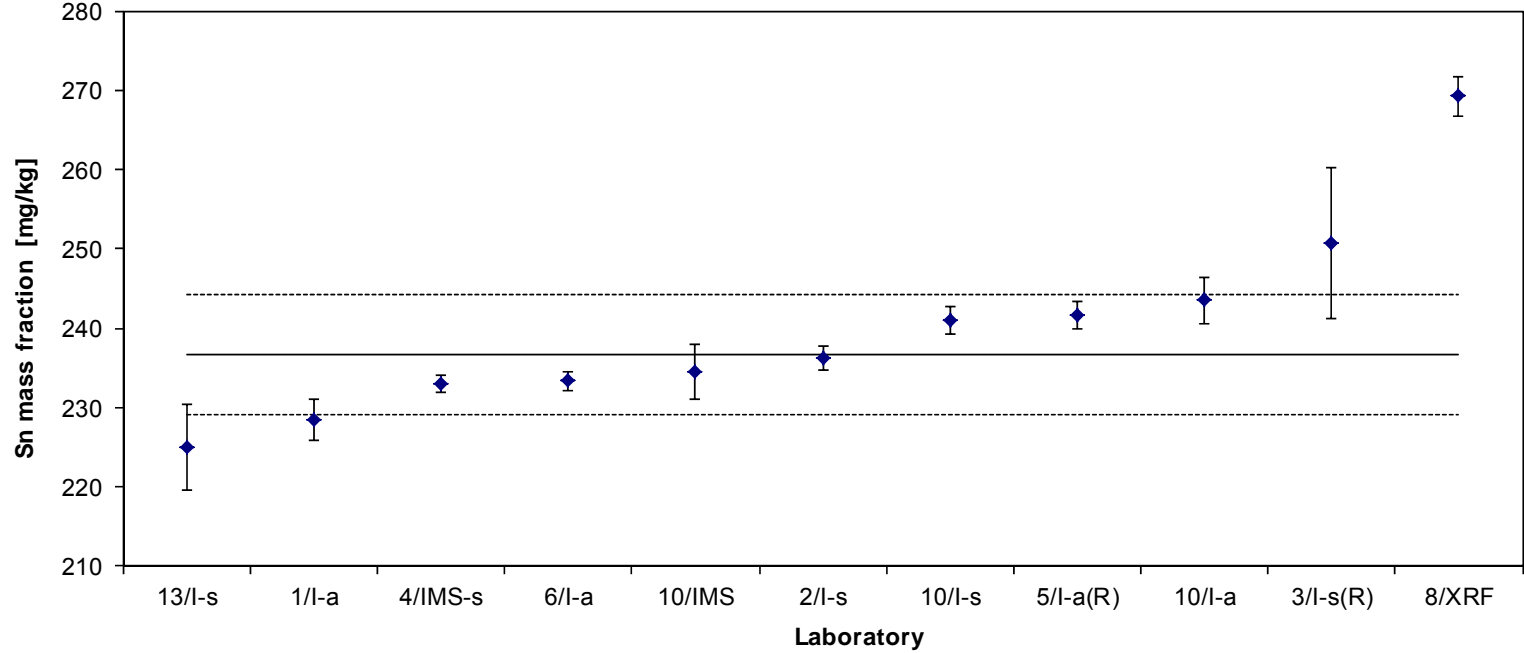


Table 40: Results for Sn

| Lab./Meth.                    | 9/l-s         | 10/IMS        | 10/l-s        | 4/l-s         | 6/l-a         | 2/l-s         | 10/l-a        | 1/l-a         | 3/l-s(R)      | 5/l-a(R)      | 13/l-s        |  | N             |
|-------------------------------|---------------|---------------|---------------|---------------|---------------|---------------|---------------|---------------|---------------|---------------|---------------|--|---------------|
| $M_i$ [mg/kg]                 | 99.3          | 101.7         | 103.7         | 103.6         | 104.0         | 104.9         | 105.0         | 105.1         | 103.03        | 109.0         | 110.00        |  | 11            |
|                               | 101.3         | 101.1         | 103.8         | 103.2         | 105.0         | 104.6         | 104.0         | 104.7         | 108.09        | 108.5         | 110.00        |  |               |
|                               | 102.2         | 101.2         | 103.5         | 104.5         | 105.0         | 104.7         | 104.0         | 103.3         | 104.04        | 110.4         | 110.00        |  |               |
|                               | 100.1         | 100.9         | 102.5         | 104.4         |               | 105.4         | 106.0         | 106.3         | 107.38        | 110.4         | 110.00        |  |               |
|                               | 101.6         | 100.0         | 103.6         | 104.2         |               | 104.3         | 106.0         | 105.0         | 106.98        | 108.6         | 110.00        |  |               |
|                               | 100.9         | 100.6         | 104.1         | 104.0         |               | 104.6         |               | 105.7         | 107.65        | 109.6         | 110.00        |  |               |
| <b><math>M</math> [mg/kg]</b> | <b>100.90</b> | <b>100.92</b> | <b>103.53</b> | <b>103.97</b> | <b>104.67</b> | <b>104.75</b> | <b>105.00</b> | <b>105.02</b> | <b>106.20</b> | <b>109.42</b> | <b>110.00</b> |  | <b>104.94</b> |
| $s_M$ [mg/kg]                 | 1.053         | 0.578         | 0.547         | 0.494         | 0.577         | 0.373         | 1.000         | 1.017         | 2.116         | 0.854         | 0.000         |  | 2.877         |
| $s_i$ [mg/kg]                 |               |               |               |               |               |               |               |               |               |               |               |  | 0.9390        |
| $s_{rel}$                     | 0.010         | 0.006         | 0.005         | 0.005         | 0.006         | 0.004         | 0.010         | 0.010         | 0.020         | 0.008         | 0.000         |  | 0.027         |

39

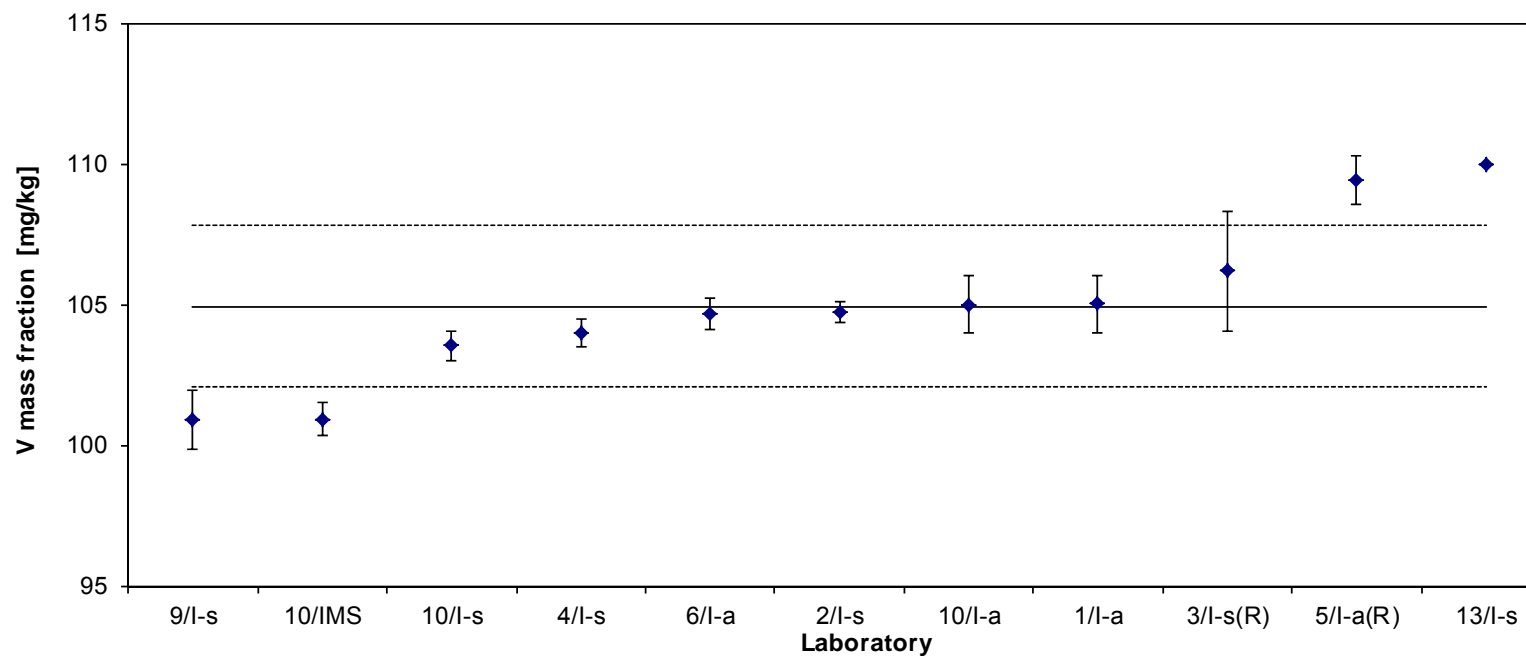


Table 41: Results for V

| Lab./Meth.                    | 6/l-a                | 11/l-s                                       | 10/l-s                                       | 6/l-s                | 4/IMS-s                                      | 13/l-s                                       | 1/l-a                            |  | N            |
|-------------------------------|----------------------|--|--|----------------------|--|--|----------------------------------|--|--------------|
| $M_i$ [mg/kg]                 | 28.0<br>27.0<br>33.0 | 31.0<br>29.0<br>31.0<br>30.0<br>30.0<br>34.0 | 33.8<br>34.2<br>33.9<br>34.1<br>33.7<br>34.1 | 36.7<br>34.0<br>36.0 | 41.5<br>39.5<br>39.8<br>40.2<br>40.4<br>40.6 | 43.0<br>44.0<br>43.0<br>44.0<br>43.0<br>43.0 | 47<br>52<br>48<br>46<br>45<br>46 |  | 7            |
| <b><math>M</math> [mg/kg]</b> | <b>29.33</b>         | <b>30.83</b>                                 | <b>33.97</b>                                 | <b>35.57</b>         | <b>40.34</b>                                 | <b>43.33</b>                                 | <b>47.33</b>                     |  | <b>37.24</b> |
| $s_M$ [mg/kg]                 | 3.215                | 1.722  | 0.197  | 1.401                | 0.703  | 0.516  | 2.503                            |  | 6.654        |
| $s_i$ [mg/kg]                 |                      |  |  |                      |  |  |                                  |  | 1.786        |
| $s_{rel}$                     | 0.110                | 0.056  | 0.006  | 0.039                | 0.017  | 0.012  | 0.053                            |  | 0.179        |

40

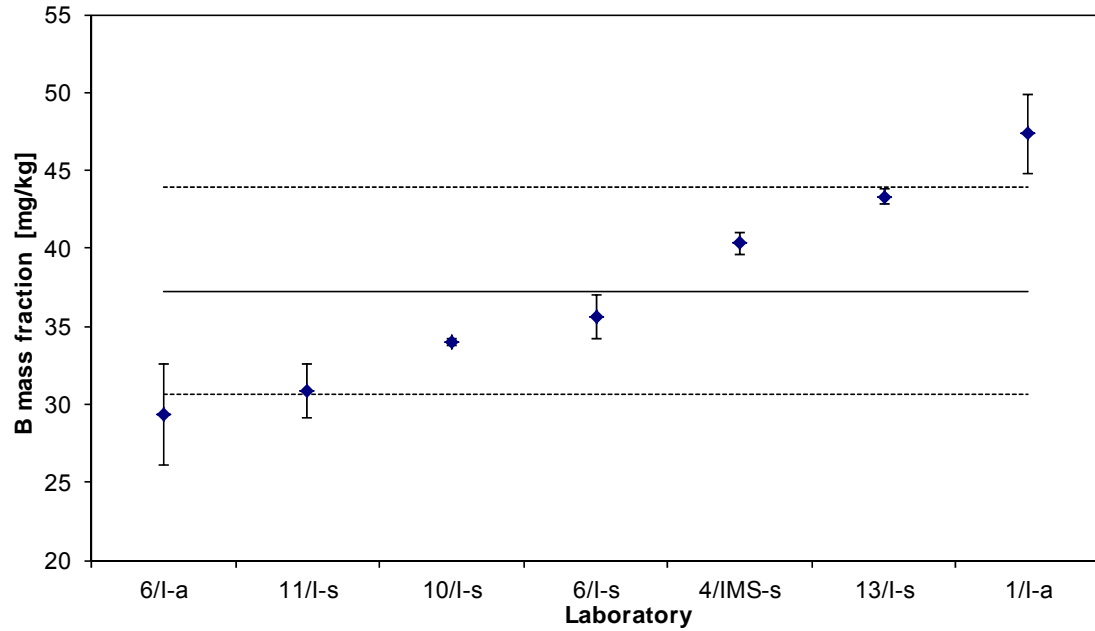


Table 42: Results for B



| Lab./Meth.                    | 6/l-s       | 10/l-s      | 4/l-s       | 11/l-s      |  | N            |
|-------------------------------|-------------|-------------|-------------|-------------|--|--------------|
| $M_i$ [mg/kg]                 | 2.4         | 5.8         | 5.8         | 8.1         |  | 4            |
|                               | 5.1         | 5.9         | 5.9         | 7.7         |  |              |
|                               | 5.2         | 5.8         | 5.8         | 9.0         |  |              |
|                               | 5.3         | 5.8         | 6.1         | 5.9         |  |              |
|                               | 5.4         | 5.7         | 6.2         | 6.1         |  |              |
|                               |             | 5.9         | 6.1         | 9.5         |  |              |
| <b><math>M</math> [mg/kg]</b> | <b>4.68</b> | <b>5.83</b> | <b>5.97</b> | <b>7.72</b> |  | <b>6.049</b> |
| $s_M$ [mg/kg]                 | 1.279       | 0.057       | 0.157       | 1.476       |  | 1.253        |
| $s_i$ [mg/kg]                 |             |             |             |             |  | 0.9801       |
| $s_{rel}$                     | 0.273       | 0.010       | 0.026       | 0.191       |  | 0.207        |

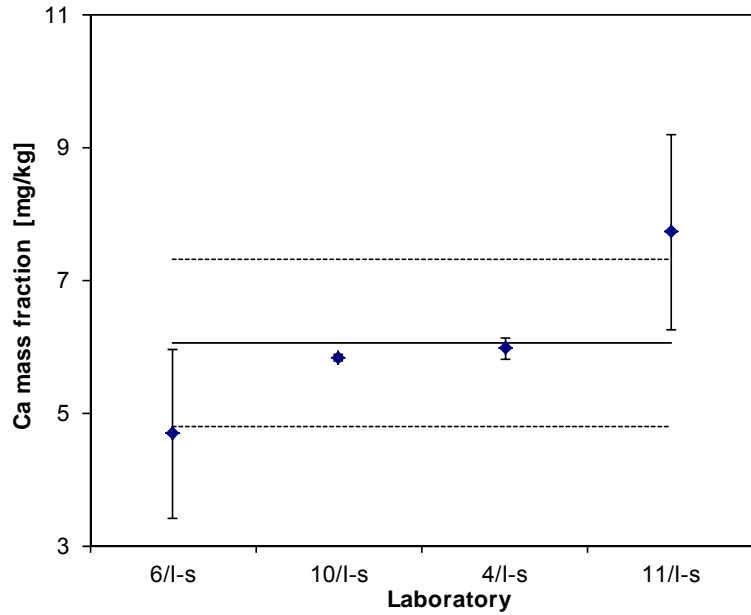


Table 43: Results for Ca

| Lab./Meth.                    | 4/l-s        | 13/l-s       | 2/l          | 6/l-s        | 11/l-s       |  | N            |
|-------------------------------|--------------|--------------|--------------|--------------|--------------|--|--------------|
| $M_i$ [mg/kg]                 | 18.3         | 17           | 29.1         | 30.4         | 35           |  | 5            |
|                               | 15.7         | 20           | 28.2         | 33.7         | 33           |  |              |
|                               | 15.9         | 22           | 29.4         | 33.4         | 34           |  |              |
|                               | 19.6         | 17           | 30.3         | 31.0         | 33           |  |              |
|                               | 20.6         | 16           | 30.3         | 33.0         | 33           |  |              |
|                               | 20.3         | 22           | 35.4         | 30.0         | 34           |  |              |
|                               |              |              |              |              |              |  |              |
| <b><math>M</math> [mg/kg]</b> | <b>18.40</b> | <b>19.00</b> | <b>30.46</b> | <b>31.92</b> | <b>33.67</b> |  | <b>26.69</b> |
| $s_M$ [mg/kg]                 | 2.165        | 2.683        | 2.550        | 1.635        | 0.816        |  | 7.383        |
| $s_i$ [mg/kg]                 |              |              |              |              |              |  | 2.0847       |
| $s_{rel}$                     | 0.118        | 0.141        | 0.084        | 0.051        | 0.024        |  | 0.277        |

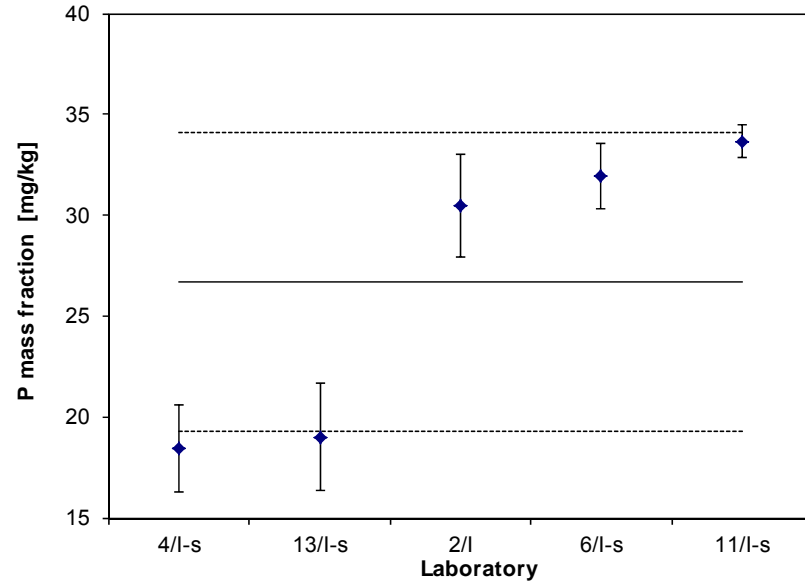


Table 44: Results for P

## 6. Instructions for use and stability

The certified reference material ERM<sup>®</sup>-EB317 is intended for the calibration and quality control of spark emission and X-ray fluorescence spectrometer used for the analysis of similar materials.

Before analysis the surface of the material should be cleaned by turning or milling.

If chips prepared from the compact material are used for wet chemical analysis, a minimum sample intake of 0.5 g has to be used.

The material will remain stable provided that it is not subjected to excessive heat (e.g. during preparation of the working surface).

## 7. Literature

- [1] ISO Guide 31, Contents of certificates of reference materials, 1981
- [2] ISO Guide 34, General requirements for the competence of reference material producers, 2000
- [3] ISO Guide 35, Reference materials - General and statistical principles for certification. Third edition, 2006
- [4] Guidelines for the production of BAM Reference Materials, 2006
- [5] Technical Guidelines for the Production and Acceptance of a European Reference Material ([www.erm-crm.org](http://www.erm-crm.org))
- [6] ASTM Designation E 826-90, Standard Practice for Testing Homogeneity of Materials for the Development of Reference Materials
- [7] Bonas G, Zervou M, Papaeoannou T, Lees M: Accred Qual Assur (2003) 8:101-107

## 8. Information on and purchase of the CRM

Certified reference material ERM<sup>®</sup>-EB317 is supplied by

### **BAM Bundesanstalt für Materialforschung und -prüfung**

Fachbereich 1.6: Anorganische Referenzmaterialien

Richard-Willstätter-Straße 11, 12489 Berlin

Phone +49 (0)30 - 8104 2061 or 1119

Fax: +49 (0)30 - 8104 1117

E-Mail: [sales.crm@bam.de](mailto:sales.crm@bam.de)

Each disc of ERM<sup>®</sup>-EB317 will be distributed together with a detailed certificate containing the certified values and their uncertainties, the mean values and standard deviations of all accepted data sets and information on the analytical methods used and the names of the participating laboratories.

Information on certified reference materials can be obtained from BAM, <http://www.bam.de/en/fachthemen/referenzmaterialien/index.htm>  
[www.webshop.bam.de](http://www.webshop.bam.de)

Tel. +49 30 8104 1111.